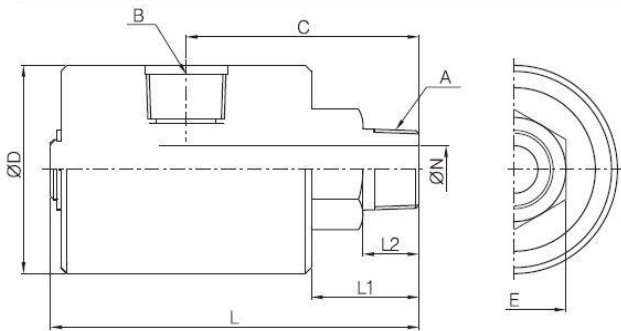


BR6011-10A, BR6011-15A, BR6011-20A



Operating Condition

- Max. Air Pressure : 10kg/cm² (150PSI)
- Max. Hydraulic Pressure : 210kg/cm² (3000PSI)
- Max. Rotation Speed : 250RPM
- Max. Temperature : 100°C (210°F)
- Media : Air, Hydraulic Oil
- * Avoid max. pressure at max. rpm operation

Features / 특징

- For Low speed rotation with Air/Oil pressure
- 저속의 공압용이나 유압용으로 개발된 제품입니다.
- * 최고회전수 조건에서 최고압력 사용을 피하여 주십시오.

[unit : mm]

MODEL NO.	A (PT)	B (PT)	C	D	E	L	L1	L2	N
BR6011-10A	3/8"	3/8"	51.5	40	22	80.5	25.5	14	8
BR6011-15A	1/2"	1/2"	73	60	32	115.5	32	18	13
BR6011-20A	3/4"	3/4"	79	70	35	125	36.5	19	16