

Product Data Sheet

POWER DISTRIBUTION BLOCK

HVPB114

Add suffix "CH" for snap-on hinged cover (HVPB114 CH)

Wire Range

- Line and Load: (1) 1/2' Studs
 - Suitable for listed lugs or flexible bus bar
 - Lugs must fit on 1/2' studs, 1.55' (39.8 mm) max width

Electrical Ratings:

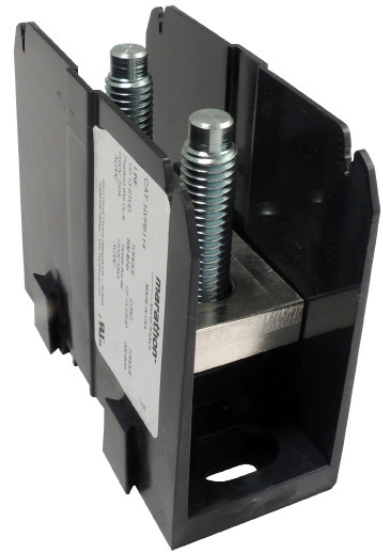
- 750 amps with prepared wire
- 595 amps with flexible bus bar
- Voltage:
 - 1500V per UL 1059 class E & CSA 22.2 No.158, class C requirements
 - 600V per UL 1059 service & industrial class (B, C) requirements
 - 600V per CSA 22.2 no.158 service & industrial class C requirements
- Short circuit current rating (SCCR) - see table below
- Factory & field wiring

Agency Compliance

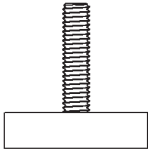
- UR - UL recognized terminal block, evaluated to UL 1059, file no. XCFR2.E62806
- cUR - UL evaluated to CSA 22.2 no.158, file no. XCFR8.E62806

Material Information

- Insulator base:
 - Thermoplastic
 - Flammability rating of insulator base UL94V0
 - Temperature rating: -40°C to 110°C (UL RTI)
- Connector - aluminum, tin plated
- Terminal screws - steel, nickel plated
- Terminal studs - steel, zinc plated
- Hardware - nuts, flat washer, split washer - steel, zinc plated
- RoHS Compliant



Termination Specifications

Line/Load Side	Termination Type	Torque	Stud Length	Maximum Lug/Bar Width
	Listed lugs or flexible bus bar on 3/8' studs	56.4 N·m/ 500 lbf·in	37.1mm / 1.46"	39.8mm / 1.55"

- For use with conductors prepared with Listed connectors such as single hole compression/crimp lugs or listed ring, fork or spade terminals.
- Conductor size, ampacity, temperature rating and type are dictated by the ratings of the listed lugs utilized and applicable code requirements.

Short Circuit Current Ratings (SCCR)

Suitable Prepared Conductor* kcmil/AWG or Suitable Flexibar		Overcurrent Protection Device	SCCR, RMS	Volts, Max
Line	Load			
500 - 2/0	500 - 2/0	no OCPD	25kA	480
*10 x 32 x 1 to *4 x 32 x 1	*10 x 32x 1 to *4 x 32 x 1	no OCPD	25kA	480
Other conductors or bus bar on 3/8' studs		no OCPD	10kA	600

*kcmil/AWG Conductors Prepared with Listed Terminals

Installation & Accessories

- Mounting (Panel):

- For use with #10 fastener with flat washer (max diameter 9/16").
- Recommended mounting torque 25-30 lbf-in (2.8 - 3.4 N·m).

- Safety Guidelines:

- Use provided hardware (flat washer, Belleville & nuts).
- Accessory cover (optional) is not intended to provide insulation for electrical spacings.
- Stack lugs in decreasing width order. Ensure contact is maintained throughout the connection.

- Covers:

- Snap-on covers available upon request
- Catalog Number: CH13321
- Covers are black polycarbonate

Drawing

