



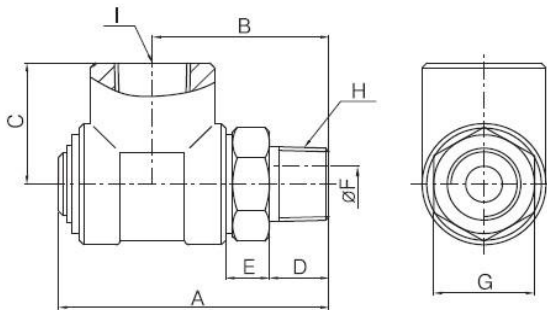
■ Operating Condition

Size Range : 8A~50A(1/4"~2")
 Max. Pressure : 210kg/cm² (3000PSI)
 Max. Temperature :
 100°C (210°F) NBR Packing
 180°C (360°F) Viton Packing
 Media : Air, Oil, Water, Hydraulic Oil

■ Features / 특징

- Pressure Balance Type
- Low Torque at High Pressure
- Extended service life
- Series KJ610은 압력밸런스 타입으로 고압에서 낮은 Torque와 제품의 긴 수명이 특징입니다.

KJ610



Type C

[unit : mm]

Nominal Size		A	B	C	D	E	F	G	H (PT)	I (PT)	Weight(kg) Type C
8A	1/4"	54.5	36	23	12	9.5	6	19	1/4	1/4	0.1
10A	3/8"	59	38.5	27	13	9.5	8	22	3/8	3/8	0.2
15A	1/2"	74.5	49.5	29	17	13	12	27	1/2	1/2	0.4
20A	3/4"	91	60	34	20	14.5	16	30	3/4	3/4	0.5
25A	1"	106	71	38.5	23	19	20	41	1	1	0.9
32A	1-1/4"	121	79	44	25	20	28	50	1-1/4	1-1/4	1.4
40A	1-1/2"	132	86	54	25	23	34	60	1-1/2	1-1/2	2.0
50A	2"	161	104	60	30	26	42	70	2	2	3.1