



### Operating Condition

- Size Range : 15A~80A (1/2"~3")
- Max. Pressure : 15kg/cm<sup>2</sup> (210PSI)
- Max. Rotation Speed :
  - 15A~40A (1/2"~1 1/2") : 300RPM
  - 50A~80A (2"~3") : 150RPM
- Max. Temperature : 180°C (360° F)
- Media : Steam, Hot Oil, Water
- \* Avoid max. pressure at max. rpm operation

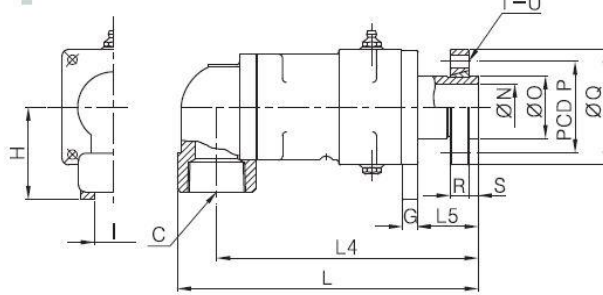
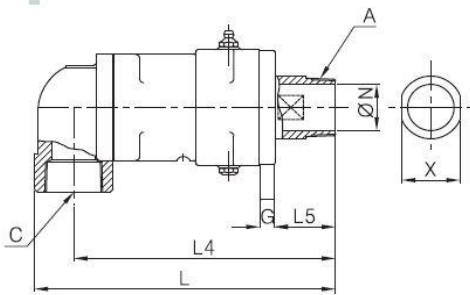
### Features / 특징

- Low Friction
- High speed operation enabled at High temperature & pressure media
- Bellows in side, enables switching between cooling & heating operation
- 회전 저항이 적고 고온고압에서 고속회전이 가능합니다.
- Bellows 사용으로 가열과 냉각의 교대사용이 가능합니다.
- \* 최고회전수 조건에서 최고압력 사용을 피하여 주십시오.

### 단식 [SINGLE]

KR1011 / KR1012

KR1015



[unit : mm]

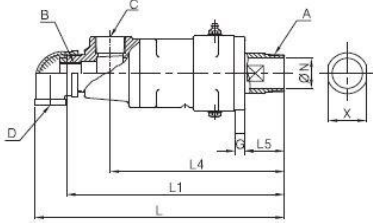
MODEL NO.		A	C	G	H	I	L	L4	L5	L6	N	X	Wt
PT [RH]	PT [LH]	(PT)	(PT)										(kg)
KR1011-15A	KR1012-15A	1/2"	1/2"	9	55	14	194	179	50	-	12	21	2.4
KR1011-20A	KR1012-20A	3/4"	3/4"	10	65	20	220	200	50	-	18	26	3.4
KR1011-25A	KR1012-25A	1"	1"	10	73	20	241	218	59	-	24	32	5.4
KR1011-32A	KR1012-32A	1-1/4"	1-1/2"	14	95	20	282	249	63	-	30	46	9.7
KR1011-40A	KR1012-40A	1-1/2"	1-1/2"	14	95	20	282	249	63	-	34	46	9.7
KR1011-50A	KR1012-50A	2"	2"	14	100	20	322	280	63	-	48	60	12
KR1011-65A	KR1012-65A	2-1/2"	2-1/2"	18	120	25	366	317	66	-	60	75	22
KR1011-80A	KR1012-80A	3"	3"	25	230	Ø18	394	339	163	84	73	89	25

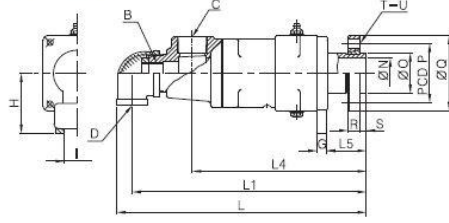
MODEL NO.	C	G	H	I	L	L4	L5	L6	N	O	P	Q	R	S	T	U	Wt
FLANGE	(PT)																(kg)
KR1015-15A	1/2"	9	55	14	184	169	40	-	12	25	45	62	11	8	4	Ø9	2.6
KR1015-20A	3/4"	10	65	20	214	194	44	-	18	30	54	74	13	8	4	Ø11	3.8
KR1015-25A	1"	10	73	20	233	209	51	-	24	35	60	80	14	9	4	Ø11	5.8
KR1015-40A	1-1/2"	14	95	20	272	239	63	-	34	50	75	96	16	9	4	Ø11	10
KR1015-50A	2"	14	100	20	306	266	63	-	48	65	95	120	19	10	4	Ø14	14
KR1015-65A	2-1/2"	18	120	25	366	317	66	-	60	80	110	136	20	12	4	Ø14	24
KR1015-80A	3"	25	230	Ø18	394	340	163	84	73	90	125	154	20	12	6	Ø14	27.7

## 복식 내관 고정 [DUPLEX | STATIONARY SYPHON]

KR1001 / KR1002

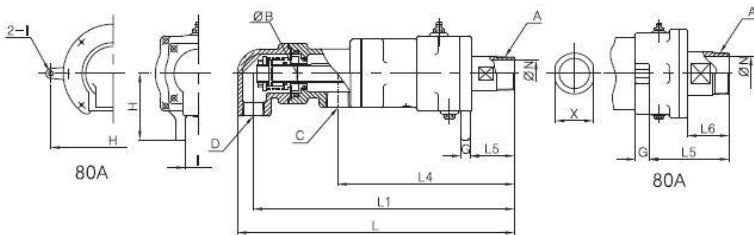


KR1005

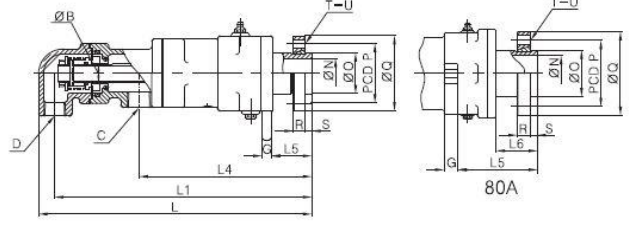


## 복식 내관 회전 [DUPLEX | ROTARY SYPHON]

KR1021 / KR1022



KR1025



[unit : mm]

MODEL NO.		A	B	C	D	G	H	I	L	L1	L4	L5	L6	N	X	Wt
PT [RH]	PT [LH]	(PT)	(PF,Ø)	(PT)	(PT)											(kg)
KR1001-15A-6A	KR1002-15A-6A	1/2"	1/8"	1/2"	1/2"	9	55	14	241	227	179	50	-	12	21	2.6
KR1001-20A-8A	KR1002-20A-8A	3/4"	1/4"	3/4"	3/4"	10	65	20	272	255	195	50	-	18	26	3.7
KR1001-25A-10A	KR1002-25A-10A	1"	3/8"	1"	3/4"	10	73	20	311	294	218	59	-	24	32	6.1
KR1021-25A-10A	KR1022-25A-10A	1"	17.3	1"	3/4"	10	73	20	327	310	218	59	-	24	32	6.3
KR1001-32A-15A	KR1002-32A-15A	1-1/4"	1/2"	1"	1"	14	95	20	349	328	250	63	-	30	46	10.7
KR1021-32A-15A	KR1022-32A-15A	1-1/4"	21.7	1"	1"	14	95	20	392	368	250	63	-	30	46	12
KR1001-40A-20A	KR1002-40A-20A	1-1/2"	3/4"	1"	1"	14	95	20	349	328	250	63	-	34	46	10.7
KR1021-40A-20A	KR1022-40A-20A	1-1/2"	27.2	1"	1"	14	95	20	392	368	250	63	-	34	46	12
KR1001-50A-25A	KR1002-50A-25A	2"	1"	1-1/2"	1"	14	100	20	389	368	272	63	-	48	60	13.1
KR1021-50A-25A	KR1022-50A-25A	2"	34	1-1/2"	1"	14	100	20	412	289	272	63	-	48	60	14.8
KR1001-65A-32A	KR1002-65A-32A	2-1/2"	1-1/4"	2"	1-1/2"	18	120	25	437	408	302	66	-	60	75	23
KR1021-65A-40A	KR1022-65A-40A	2-1/2"	48.6	1-1/2"	1-1/2"	18	120	25	465	432	302	66	-	60	75	26.3
KR1001-80A-50A	KR1002-80A-50A	3"	2"	2"	2"	25	230	Ø18	515	475	340	163	84	73	89	27
KR1021-80A-50A	KR1022-80A-50A	3"	60.5	2"	2"	25	230	Ø18	519	488	340	163	84	73	89	28.8

MODEL NO. FLANGE	B (PF,Ø)	C (PT)	D (PT)	G	H	I	L	L1	L4	L5	L6	N	O	P	Q	R	S	T	U	Wt (kg)
KR1005-15A-6A	1/8"	1/2"	1/2"	9	55	14	231	217	169	40	-	12	25	45	62	11	8	4	Ø9	2.8
KR1005-20A-8A	1/4"	3/4"	3/4"	10	65	20	264	249	289	44	-	18	30	54	74	13	8	4	Ø11	4.1
KR1005-25A-10A	3/8"	1"	3/4"	10	73	20	303	286	209	51	-	24	35	60	80	14	9	4	Ø11	6.4
KR1025-25A-10A	17.3	1"	3/4"	10	73	20	321	304	214	51	-	24	35	60	80	14	9	4	Ø11	6.7
KR1005-40A-20A	3/4"	1"	1"	14	95	20	346	327	249	63	-	34	50	75	96	16	9	4	Ø11	10
KR1025-40A-20A	27.2	1"	1"	14	95	20	391	368	250	63	-	34	50	75	96	16	9	4	Ø11	11.3
KR1005-50A-25A	1"	1-1/2"	1"	14	100	20	387	366	270	63	-	48	65	95	120	19	10	4	Ø14	14.5
KR1025-50A-25A	34	1-1/2"	1"	14	100	20	410	387	267	63	-	48	65	95	120	19	10	4	Ø14	16.2
KR1005-65A-32A	1-1/4"	2"	1-1/2"	18	120	25	437	408	302	66	-	60	80	110	136	20	12	4	Ø14	24.5
KR1025-65A-40A	48.6	1-1/2"	1-1/2"	18	120	25	460	432	302	66	-	60	80	110	136	20	12	4	Ø14	28.3
KR1005-80A-50A	2"	2"	2"	25	230	Ø18	515	475	340	163	84	73	90	125	154	20	12	6	Ø14	29.7
KR1025-80A-50A	60.5	2"	2"	25	230	Ø18	519	488	337	163	84	73	90	125	154	20	12	6	Ø14	31.5