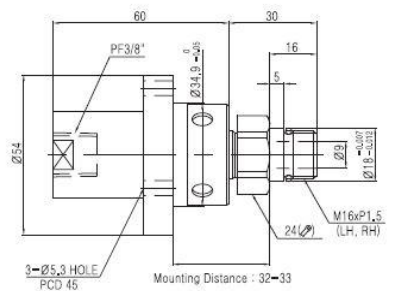


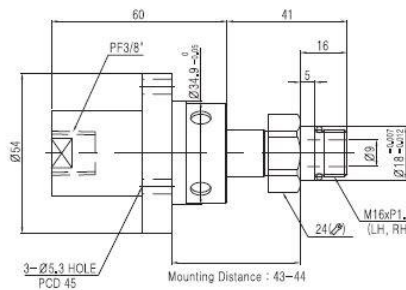
■ KR6364-30, KR6363-30



KR6364-30-1
KR6363-30-1



KR6364-30-2
KR6363-30-2



■ Operating Condition

- Max. Coolant Pressure : 105bar (1,520PSI)
- Max. Rotation Speed : 30,000/min (30,000RPM)
- Max. Temperature : 80°C (180°F)
- Media : Air, Coolant, Hydraulic Oil
- * Avoid max. pressure at max. rpm operation

■ Features / 특징

- For high speed machining Centers
- Bearingless configuration and separate type
- Dry Running at high speed without coolant pressure
- Other port size and connection unions are available on order demand

* 최고회전수 조건에서 최고압력 사용을 피하여 주십시오.

■ Preparation of Spindle End and Mounting Bracket

