

## KR6701-32A, KR6706-32A



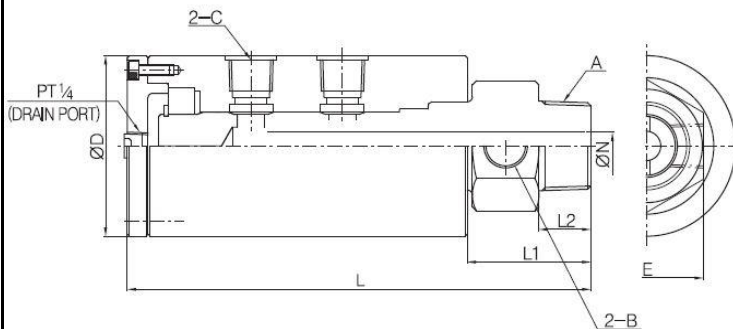
### ■ Operating Condition

Max. Air Pressure : 10kg/cm<sup>2</sup> (150PSI)  
 Max. Hydraulic Pressure : 210kg/cm<sup>2</sup> (3000PSI)  
 Max. Rotation Speed : 250 RPM  
 Max. Temperature : 100°C (210°F)  
 Media : Air, Hydraulic Oil  
 \* Avoid max. pressure at max. rpm operation

### ■ Features / 특징

- Advanced model to KR6101, KR6106
- Leaking Oil can be retrieved to Oil tank through Drain port & pipe
- Clean operation can be made.

- 본 제품은 KR6101, KR6106보다 개선된 제품입니다. Drain Port가 있어 약간의 누유시 Drain pipe를 통해 Oil Tank로 회수되기 때문에 생산현장의 청결이 유지됩니다.
- \* 최고회전수 조건에서 최고압력 사용을 피하여 주십시오.



[unit : mm]

Nominal Size	A	B (PT)	C (PT)	D	E	L	L1	L2	N
KR6701-32A	PT 1-1/4"	1/2"	1/2"	86	55	223	59.5	25	14
KR6706-32A	NPT 1-1/4"	1/2"	1/2"	86	55	223	59.5	25	14