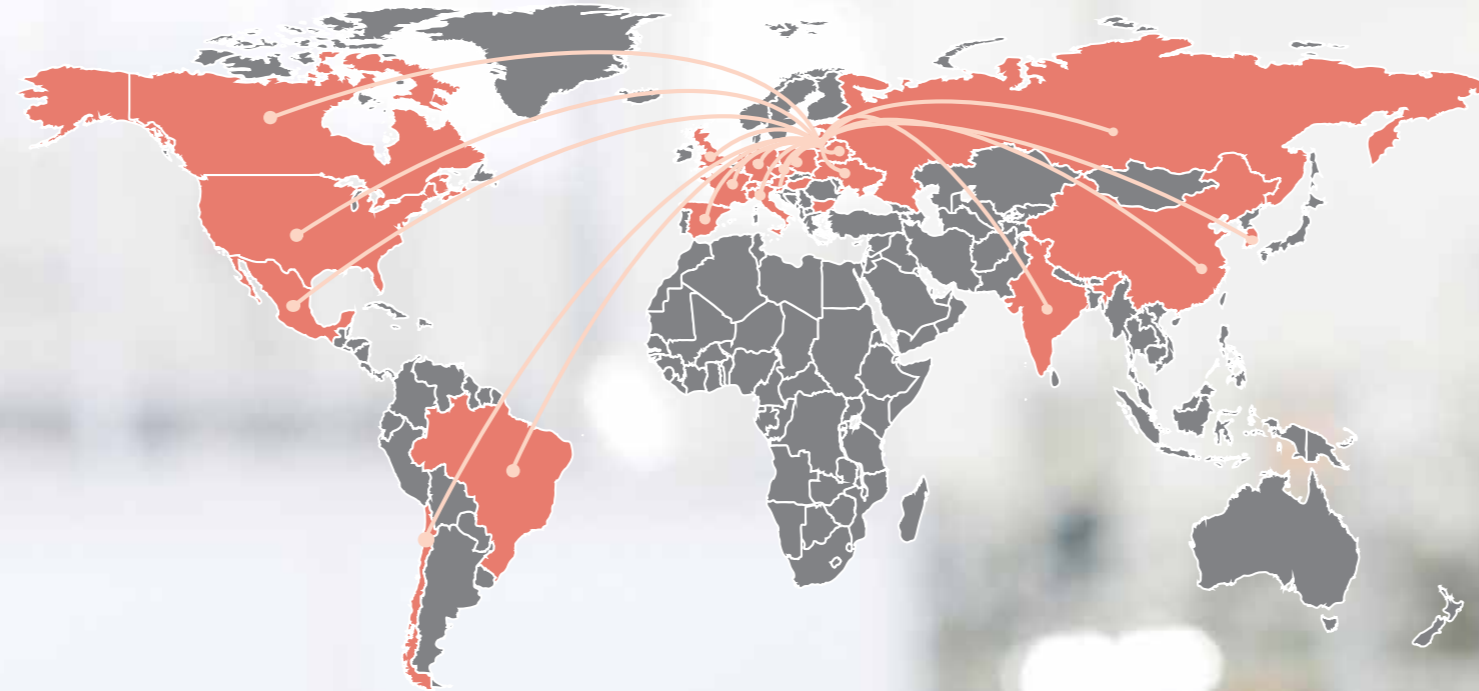


## MAIN EXPORT COUNTRIES:

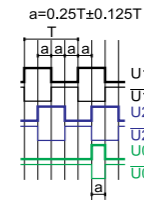


## ELECTRICAL DATA

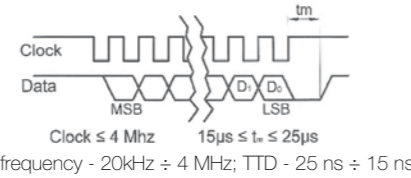
Supply voltage: - standard - optional	+5V±5% +(10...30)V±5%
Light source	LED
Accuracy	±0.3 arc. degree
Resolution	2 <sup>12</sup> (4096)
Code	binary
Maximum operating frequency, kHz	300
Standard cable length	1m
Maximum cable length	1m

### Output signals:

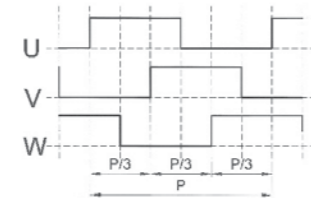
Incremental	TTL, HTL (Up to 1024ppr)
-------------	--------------------------



Through synchronous serial interface	SSI (Up to 12bit)
--------------------------------------	-------------------



Commutation	UWV (pole number 2, 4, 6, 8, 10, 12, 14, 16)
-------------	--



## ACCESSORIES

<b>CONNECTORS FOR CABLE</b>	B12 12-pin round connector	C9 12-pin round connector	C12 12-pin round connector	D9 9-pin flat connector	D15 15-pin flat connector	RS10 10-pin round connector	ONC 10-pin round connector
<b>CONNECTORS ON HOUSING</b>	C9 12-pin round connector		C12 12-pin round connector	RS10 10-pin round connector		ONC 10-pin round connector	
<b>DIGITAL READOUT DEVICES</b>	CS3000			CS5500			
<b>COUPLING</b>	SC30						
<b>EXTERNAL INTERPOLATOR</b>	NK						

## ORDER FORM

AM58 X - X - XX - XX - XXX - XXXX - X - X

TYPE:	OUTPUT SIGNALS:	POLE NUMBER FOR SIGNAL UVW:	PULSE NR. PER TTL/HTL:	BIT NUMBER FOR SSI:	VOLTAGE SUPPLY:	CABLE LENGTH AND OUTLET OR FLANGE SOCKET ON CASE OUTLET:	CONNECTOR OR FLANGE SOCKET TYPE:	COUPLING:
M - AM58M	H1 - TTL	P0 - for H1, H4, H6	for H2 - B0 - for H2	A01 - 1m (A-axial cable)	05V - +5V	W* - without connector	0 - without coupling	
B - AM58B	H2 - UWV	P2 - 2 poles	16 ppr - B6 - 6 bit	R01 - 1m (R-radial cable)	30V - +(10...30)V	B12* - round, 12 pins	1 - with coupling	
C - AM58C	H3 - TTL-UWV	P4 - 4 poles	32 ppr - B7 - 7 bit	AR01 - 1m (AR-universal cable outlet)		C9 - round, 9 pins		
C2	H4 - TTL-SSI	P6 - 6 poles	64 ppr - B8 - 8 bit			C12 - round, 12 pins		
AM58C2	H5 - TTL-UWV-SSI	P8 - 8 poles	128 ppr - B9 - 9 bit			D9* - flat, 9 pins		
C3	H6 - HTL	P10 - 10 poles	256 ppr - B10 - 10 bit			D15* - flat, 15 pins		
AM58C3	H7 - HTL-UWV	P12 - 12 poles	512 ppr - B11 - 11 bit			RS10 - round, 10 pins		
D - AM58D	H8 - HTL-UWV-SSI	P14 - 14 poles	1024 ppr - B12 - 12 bit			ONC - round, 10 pins		
		P16 - 16 poles						

ORDER EXAMPLES:  
1) AM58M-H8-P8-B10-05-CA/C12-1  
2) AM58B-H1-P0-B12-05-R01/W-0

\*only for cable

The company under the name **JSC "Precizika Metrology"** began work after the change of name of the Lithuanian - American Joint Venture "Brown & Sharpe - Precizika". The company has a proud history of old traditions in the leadership of design and production of metrological equipment. Its workforce has been involved for over fifty years in the supply of measuring technology and systems to automate factories as well as in the development of optical scale manufacturing technology.

In 2000, the production process was certified to fully meeting the requirements of EN ISO 9002:1994, in 2003 – EN ISO 9001:2000.

The company's goal is to consistently supply high quality products and services to meet customer demands on a timely basis. The company's main products are linear and angular glass scale gratings, and the linear and rotary displacement measuring systems.

**JSC "Precizika Metrology"** represents worldwide known companies and suppliers of measuring equipment, CNC centers, executes installation and services of them, trains the users, and executes upgrading of used CMM and manual cutting machine-tools.

# AM58

AM58M, AM58B,  
AM58C, AM58C2,  
AM58C3, AM58D



MAGNETIC ABSOLUTE ROTARY ENCODER

Absolute magnetic rotary encoder AM58 is used for information about rotary movements electronic units when working in the fields of metal working, industry automatization, robotics industry, equipment control, measuring equipment and others.

Encoder has magnetic operation device and case. Incorporated to case special integrated circuit receives magnetic device rotation and transfers it to output signals.



Žirmūnų str. 139, LT-09120 Vilnius, Lithuania

sales@precizika.lt

Tel.: +370 (5) 236 3683

Fax.: 370 (5) 236 3609

www.precizika.lt



# AM58

AM58M, AM58B,  
AM58C, AM58C2,  
AM58C3, AM58D

## RECOMMENDED APPLICATIONS



SOLAR SYSTEMS

WIND SYSTEMS

PACKAGING

TOOL REVOLVER

MINING DRILLS

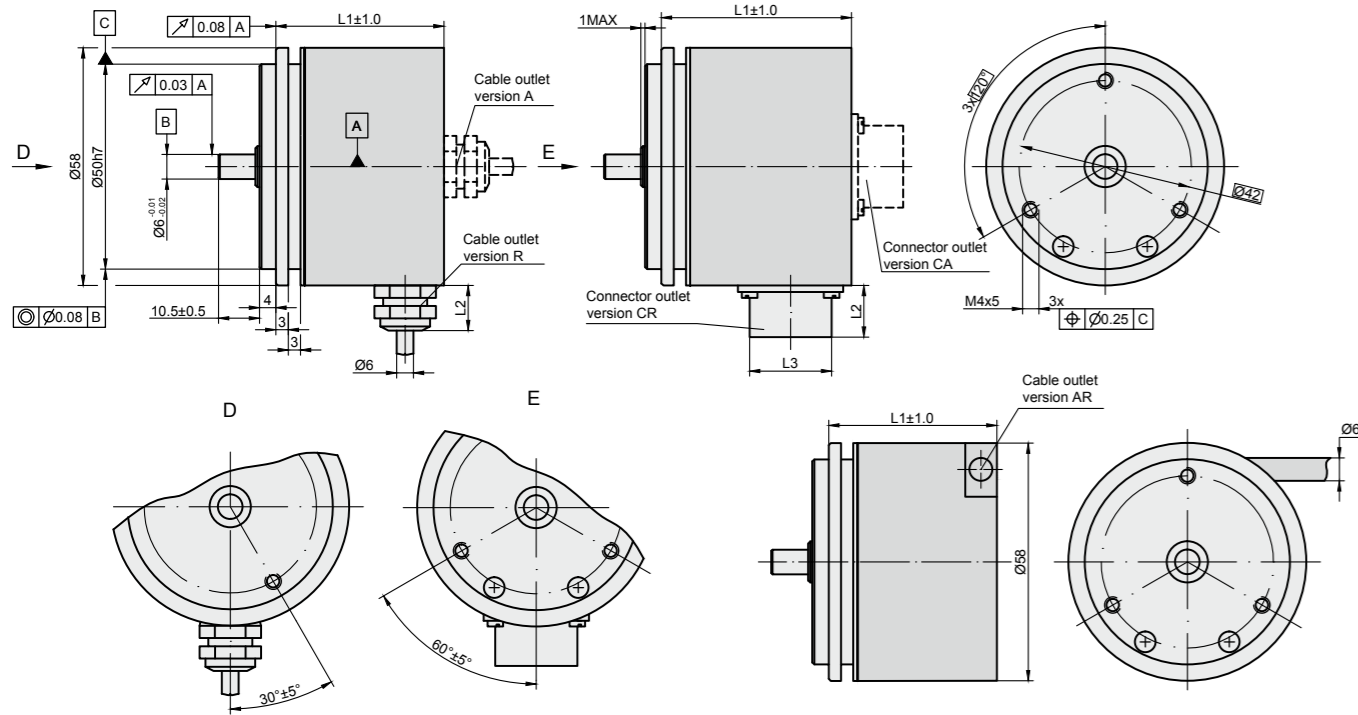
RETROFITTING

MAINTENANCE

## MECHANICAL DATA

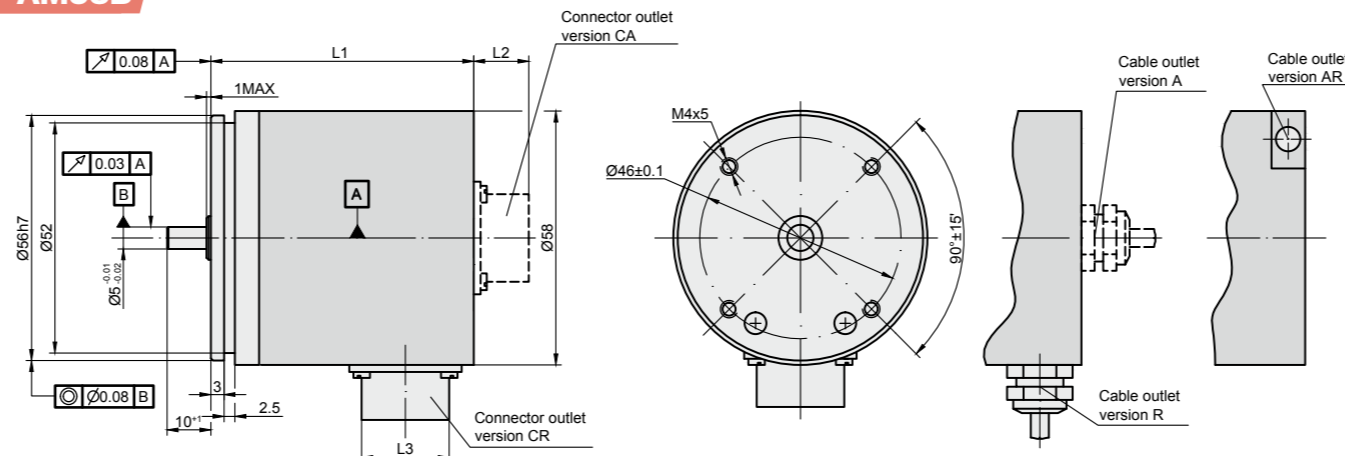
Maximum shaft speed	12000 rpm	Maximum weight without cable	0.25 kg
Maximum shaft load:		Operating temperature	-25...+85 °C
- axial	10 N	Storage temperature	-40...+125 °C
- radial (at shaft end)	20 N	Maximum humidity (non-condensing)	98 %
Starting torque at 200C	< 0.01 Nm	Permissible vibration (55 to 2000 Hz)	< 100 m/s <sup>2</sup>
Rotor moment of inertia	< 15 gcm <sup>2</sup>	Permissible shock (11 ms)	< 1000 m/s <sup>2</sup>
Protection (IEC 529):	up to IP67		

## AM58M



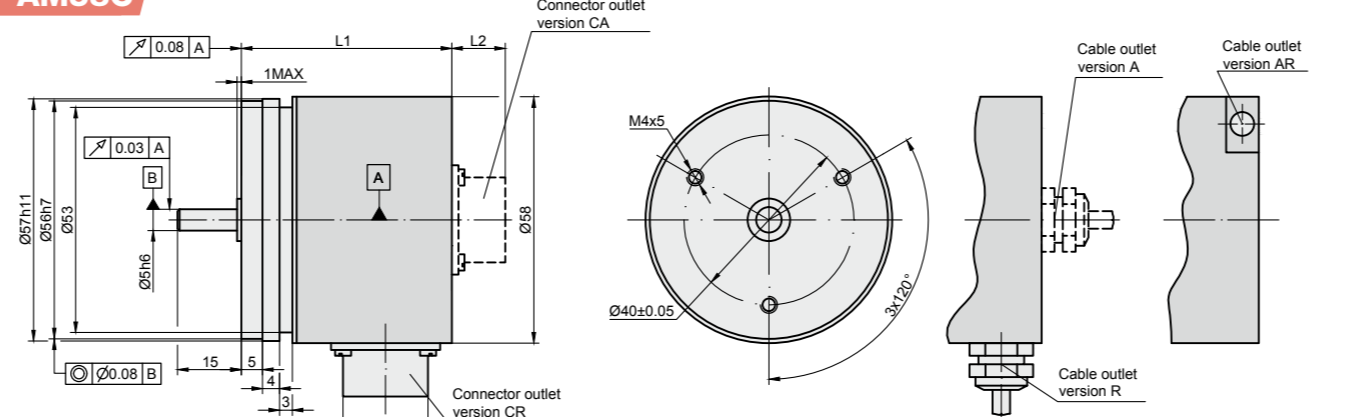
Connector type / cable outlet	ONC axial	RS10 axial	C12, C9 axial	ONC radial	RS10 radial	C12, C9 radial	Cable axial (ver. A)	Cable radial (ver. R)	Cable axial-radial (ver. AR)
L1	41 mm	41 mm	41 mm	54 mm	53 mm	41 mm	41 mm	43 mm	
L2	16 mm	9 mm	22 mm	16 mm	9 mm	22 mm	12 mm	12 mm	
L3	M24	M14	M23	M24	M14	M23	-	-	-

## AM58B



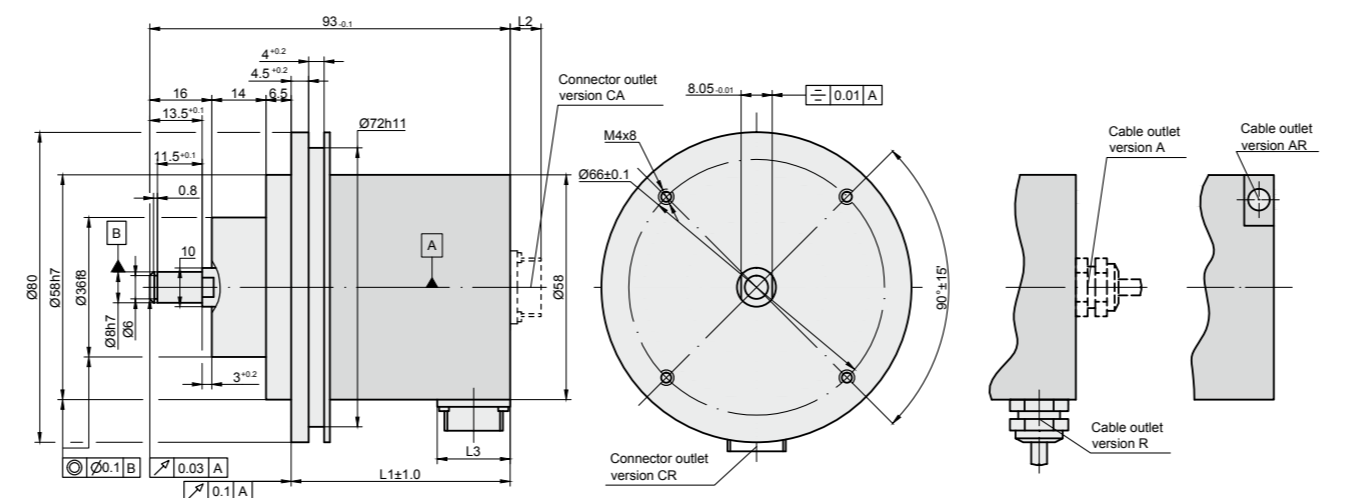
Connector type / cable outlet	ONC axial	RS10 axial	C12, C9 axial	ONC radial	RS10 radial	C12, C9 radial	Cable axial (ver. A)	Cable radial (ver. R)	Cable axial-radial (ver. AR)
L1	44.5 mm	44.5 mm	44.5 mm	57.5 mm	56.5 mm	56.5 mm	44.5 mm	44.5 mm	46.6 mm
L2	16 mm	9 mm	22 mm	16 mm	9 mm	22 mm	12 mm	12 mm	
L3	M24	M14	M23	M24	M14	M23	-	-	-

## AM58C



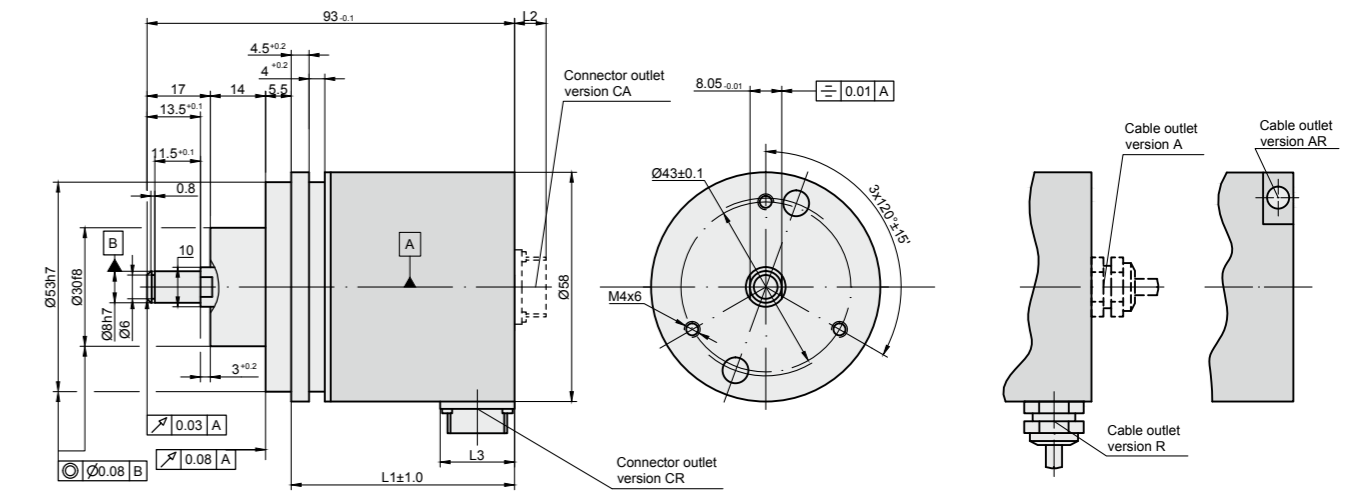
Connector type / cable outlet	ONC axial	RS10 axial	C12, C9 axial	ONC radial	RS10 radial	C12, C9 radial	Cable axial (ver. A)	Cable radial (ver. R)	Cable axial-radial (ver. AR)
L1	47 mm	47 mm	47 mm	60 mm	59 mm	59 mm	47 mm	47 mm	49 mm
L2	16 mm	9 mm	22 mm	16 mm	9 mm	22 mm	12 mm	12 mm	
L3	M24	M14	M23	M24	M14	M23	-	-	-

## AM58C2



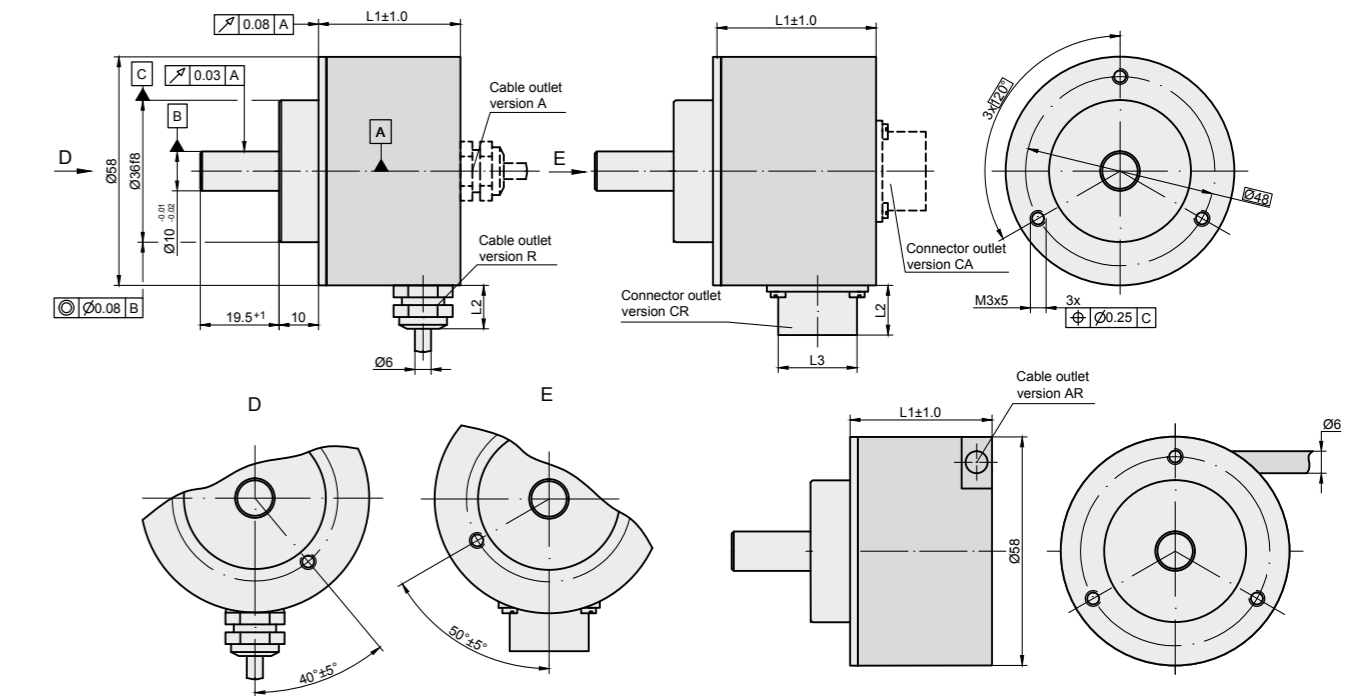
Connector type / cable outlet	ONC axial	RS10 axial	C12, C9 axial	ONC radial	RS10 radial	C12, C9 radial	Cable axial (ver. A)	Cable radial (ver. R)	Cable axial-radial (ver. AR)
L1	44.5 mm	44.5 mm	44.5 mm	-	56.5 mm	56.5 mm	44.5 mm	44.5 mm	46.5 mm
L2	16 mm	9 mm	22 mm	16 mm	9 mm	22 mm	12 mm	12 mm	
L3	M24	M14	M23	M24	M14	M23	-	-	-

## AM58C3



Connector type / cable outlet	ONC axial	RS10 axial	C12, C9 axial	ONC radial	RS10 radial	C12, C9 radial	Cable axial (ver. A)	Cable radial (ver. R)	Cable axial-radial (ver. AR)
L1	50 mm	50 mm	50 mm	-	62 mm	62 mm	50 mm	50 mm	52 mm
L2	16 mm	9 mm	22 mm	16 mm	9 mm	22 mm	12 mm	12 mm	
L3	M24	M14	M23	M24	M14	M23	-	-	-

## AM58D



Connector type / cable outlet	ONC axial	RS10 axial	C12, C9 axial	ONC radial	RS10 radial	C12, C9 radial	Cable axial (ver. A)	Cable radial (ver. R)	Cable axial-radial (ver. AR)
L1	37.5 mm	37.5 mm	37.5 mm	-	49.5 mm	49.5 mm	37.5 mm	37.5 mm	39.5 mm
L2	16 mm	9 mm	22 mm	16 mm	9 mm	22 mm	12 mm	12 mm	
L3	M24	M14	M23	M24	M14	M23	-	-	-