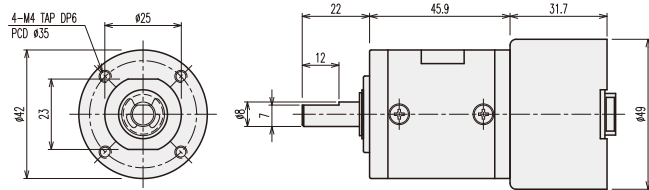


## K42-TYPE

## Planetary GEARHEAD

### DIMENSIONS

#### K42-4932 BLDC SERIES



GEARHEAD LENGTH

| RATIO        | L    | RATIO           | L    |
|--------------|------|-----------------|------|
| 1/4          | 32.5 | 1/212 ~ 1/864   | 52.6 |
| 1/14 ~ 1/24  | 39.2 | 1/1062 ~ 1/3600 | 59.3 |
| 1/49 ~ 1/144 | 45.9 |                 |      |

#### BLDC MOTOR PERFORMANCE DATA

| MODEL    | ITEM | VOLTAGE (DC) | NO LOAD |      | AT MAX. EFF. |   |      | WEIGHT (g) |
|----------|------|--------------|---------|------|--------------|---|------|------------|
|          |      |              | mA      | rpm  | gf-cm        | A | rpm  |            |
| NB4932S2 |      | 24V          | 500     | 5000 | 385          | 1 | 3800 | 210        |

#### AT MAXIMUM EFFICIENCY (K42-□□□□-NB4932S2)

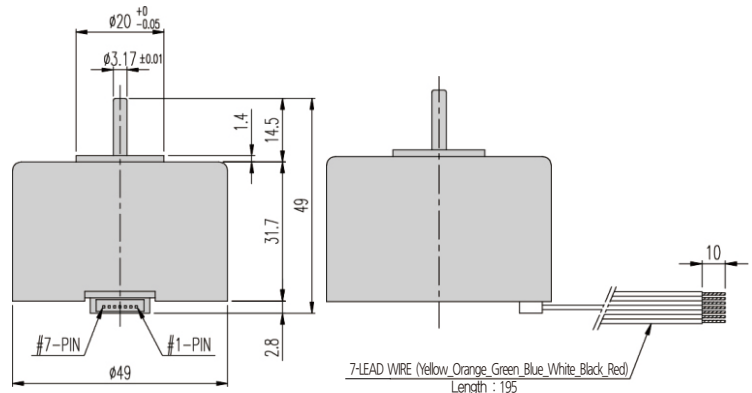
| GEAR   | MODEL | NB4932S2<br>DC 24V |        |
|--------|-------|--------------------|--------|
|        |       | rpm                | kgf-cm |
| 1/004  |       | 950                | 1.4    |
| 1/014  |       | 271                | 4.4    |
| 1/017  |       | 224                | 5.3    |
| 1/024  |       | 158                | 7.5    |
| 1/049  |       | 78                 | 14     |
| 1/061  |       | 62                 | 17     |
| 1/084  |       | 45                 | 24     |
| 1/104  |       | 37                 | 29     |
| 1/144  |       | 26                 | 30     |
| 1/212  |       | 18                 | 30     |
| 1/263  |       | 14                 | 30     |
| 1/294  |       | 13                 | 30     |
| 1/504  |       | 7.5                | 30     |
| 1/624  |       | 6.1                | 30     |
| 1/720  |       | 5.3                | 30     |
| 1/864  |       | 4.4                | 30     |
| 1/1062 |       | 3.6                | 30     |
| 1/1470 |       | 2.6                | 30     |
| 1/2500 |       | 1.52               | 30     |
| 1/3000 |       | 1.26               | 30     |
| 1/3600 |       | 1.05               | 30     |

#### How to connect when speed control is not needed.

| No - Color | Pin - Contents | Connected during operation |
|------------|----------------|----------------------------|
| 1 - Yellow | 20FG           | No Use                     |
| 2 - Orange | 5V             | DC 5V (+)                  |
| 3 - Green  | CW/CCW         | 5V(+)=CW<br>5V(-)=CCW      |
| 4 - Blue   | PWM            | DC 5V (+)                  |
| 5 - White  | ST/SP          | DC 5V (+)                  |
| 6 - Black  | GND            | DC 24V, 5V (-)             |
| 7 - Red    | 24V            | DC 24V (+)                 |

#### - Caution -

1. Use carefully input voltage range of connector each pin.
  2. Two voltage is needed to run motor.
  3. 20FG signal is output signal and no connection is possible but insulation is needed.
  4. Execute function change under motor's no working.
- \* Please be cautious that Motor can be damaged when connected to incorrect power (+) (-).



- \* Gearbox output shaft rotation direction is same direction with motor.
- \* Proceed function change in motor stop type.
- \* Controller for speed control is GUN type.

