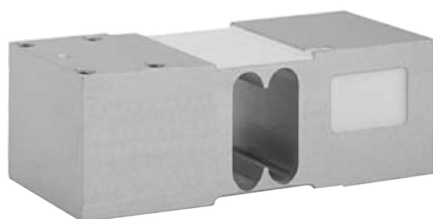




LOAD CELLS

off center

1260



- Large platform scales
- Hanging scales
- Check weighing
- Capacities 50–635kg
- Aluminum construction
- Single-point 600x600mm platform
- OIML R60 and NTEP approved
- IP66 protection
- EEx ia IIC T4 hazardous area approval (optional)
- FM approval available (optional)

TECHNICAL CHARACTERISTICS 1260

Rated capacity—R.C. (Emax):	50, 75, 100, 150, 250, 300, 500, 635kg
Rated output (R.O.):	2.0 mV/V
Zero balance:	0.2 ±mV/V
Creep (30 min.):	0.0170 ±% of applied load
Total error:	0.0200 ±% of rated output
Temperature effect on zero:	0.0023 ±% of rated output/°C
Temperature effect on output	0.0010 ±% of applied load/°C
Temperature range, compensated:	–10 to +40 °C
Temperature range, safe:	–20 to +70 °C
Maximum safe central overload:	150 % of R.C.
Ultimate central overload:	300 % of R.C.
Excitation, recommended:	10 VDC or VAC RMS
Excitation, maximum:	15 VDC or VAC RMS
Input impedance:	415±15 Ohms
Output impedance:	350±3 Ohms
Insulation resistance:	>2000 MOhms
Cable length:	3mt
Cable type:	6-wire, braided, polyurethane, dual floating screen
Environmental protection:	IP66
Platform size (max):	600 x 600 mm





LOAD CELLS

off center

1260

