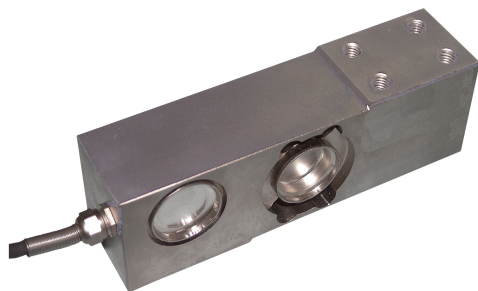


**LOAD CELLS**

off center

PSTA5



High accuracy at a competitive price

Capacities from 100 to 500 Kg

IP68 Protection

Made in stainless steel

**TECHNICAL CHARACTERISTICS PSTA5**

Material:	Steel
Capacity:	100-500 kg
Safe over load:	150% F.S.
Breaking overload:	300% F.S.
Supply voltage:	Vcc 15 Max
Output:	mV/V 2
Output tolerance:	0,1 % F.S.
Zero tolerance:	1 % F.S.
Linearity:	0,03 % F.S.
Hysteresis:	0,03 % F.S.
Reapeatability:	0,03 % F.S.
Input resistance:	380-386 Ohm
Output resistance:	350-351 Ohm
Insulation resistance:	> 2000 MOhm
Creep (30 min.):	0,03 % F.S.
Temperature range:	-10 ÷ + 40 °C
Max temperature range:	-20 ÷ + 70 °C
Temperature effect zero:	0,003 % F.S./°C
Temperature effect output:	0,002 % F.S./°C
Degree of protection:	IP68





LOAD CELLS

off center

PSTA5

