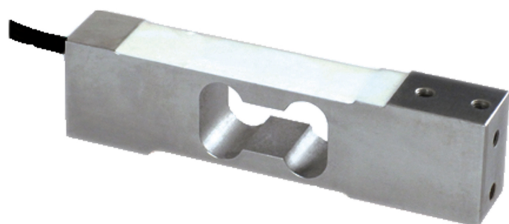


LOAD CELLS

off center

SPI



Built in stainless steel AISI 420
 IP67 protection
 Built according to OIML R60
 Flow rates from 10 to 200kg
 Maximum plate size: 400x400 mm

TECHNICAL CHARACTERISTICS SPI

| | |
|-------------------------------------|---|
| Capacity: | 10, 30, 50, 100, 200 kg |
| Combined error: | $< \pm 0.03\% \text{ RO}$ |
| Repeatability: | $< \pm 0.02\% \text{ RO}$ |
| Creep (30 minutes): | $< \pm 0.03\% \text{ RO}$ |
| Safe overload: | 150% RL |
| Ultimate overload: | 300% RL |
| Power supply: | 5÷12 Vcc/ca |
| Insulation resistance: | 385 ± 30 Ohms |
| Output resistance: | 350 ± 3 Ohms |
| Insulation resistance: | > 2000 MOhm 50VDC between the branches of the bridge and the cell |
| Nominal sensitivity: | 2 ± 10% mV/V |
| Zero balance: | $< \pm 0.1 \text{ mV/V}$ |
| Temperature range: | -20 ÷ +60 °C |
| Compensated temperature range: | -10 ÷ +40 °C |
| Temperature effect on zero balance: | $< \pm 0.0025\% \text{ RO}/^{\circ}\text{C}$ |
| Temperature effect on output: | $< \pm 0.0025\% \text{ SN}/^{\circ}\text{C}$ |
| Deflection at maximum load: | 0.5mm |
| Degree of protection: | IP67 |
| Material: | Stainless steel AISI 420 |
| Electrical connection: | 6-conductor shielded cable, length 6 m |

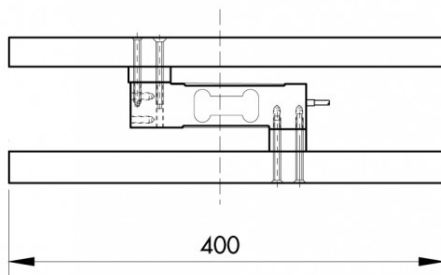
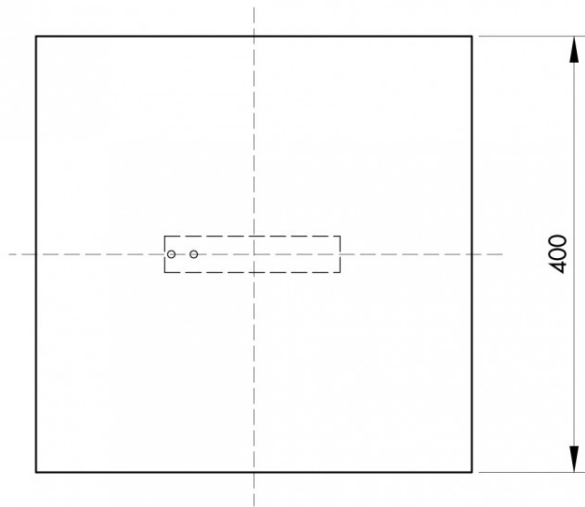




LOAD CELLS

off center

SPI



| Electrical Connection | |
|-----------------------|--------------|
| + Excitation | Red |
| - Excitation | Black |
| + Sense | Blue |
| - Sense | Yellow |
| + Signal | Green |
| - Signal | White |
| Shield | Cable Shield |

Error is within 0.02% SN applied with 1/2 of capacity at the position of 200mm of eccentricity

The center of loading plate and also the center of the load cell should be the same position



