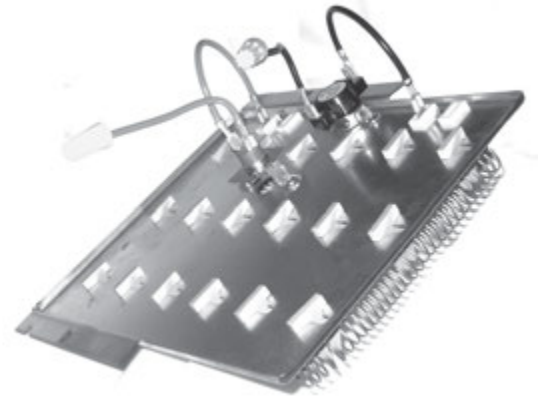




# ELECTRIC DRYER ELEMENTS

PART NO.	DESCRIPTION
<b>503978</b>	<b>For AMANA</b> 5350 watt, 240V



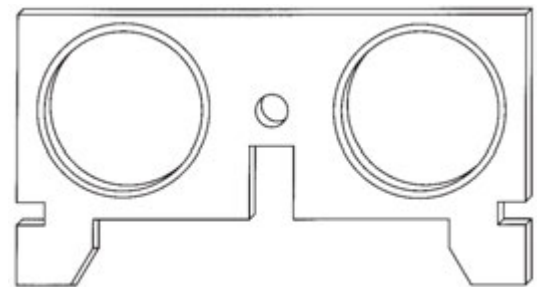
503978

PART NO.	DESCRIPTION
<b>510329P</b>	<b>For ALLIANCE</b> 5350 watt, 240V (t-stats not included)

PART NO.	DESCRIPTION
	<b>For GENERAL ELECTRIC</b>
<b>WE11M21</b>	5000 watt, 240V
<b>WE11M23</b>	5000 watt, 240V
<b>WE11X10004</b>	3000 watt, 240V
<b>WE11X10006</b>	1200 watt, 120V
<b>23DB</b> (WE1M307)	Bracket with insulators



WE11M23



WE1M307

# ELECTRIC DRYER ELEMENTS



PART NO.	DESCRIPTION
	<b>For LG</b>
<b>5301EL1001</b>	5400 watt, 240V Complete Element with t-stats and wires
<b>6931EL3003</b>	High Limit Assembly
<b>6931EL3001</b>	Thermostat



5301EL1001



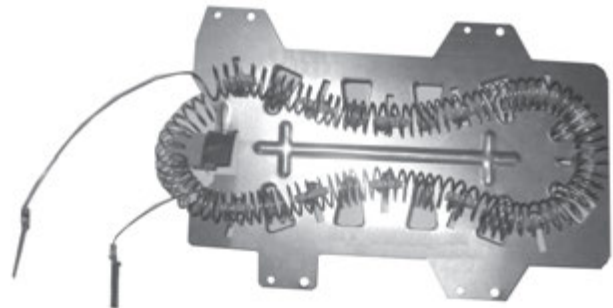
6931EL3003



6931EL3001

**NEW**

PART NO.	DESCRIPTION
	<b>For SAMSUNG</b>
<b>DC47-00019A</b>	Dryer heater element 5300 watt, 240V
<b>DC97-14486A</b>	Dryer element only (no housing) 5300 watt, 240V

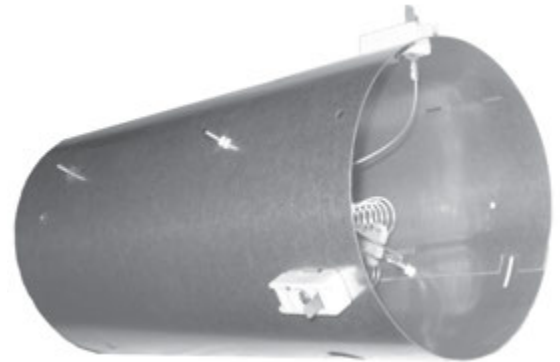


DC47-00019A

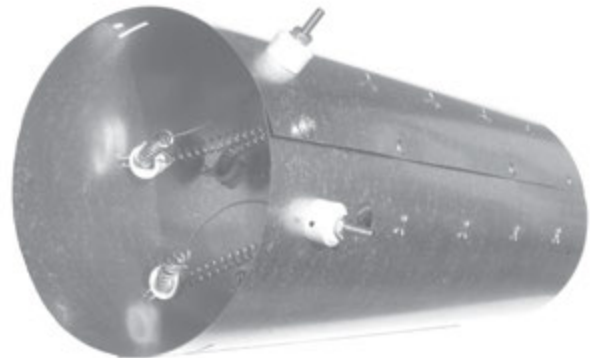


# ELECTRIC DRYER ELEMENTS

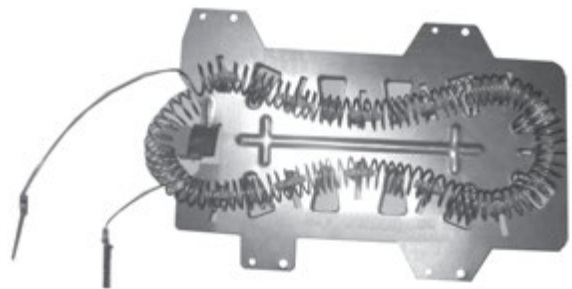
PART NO.	DESCRIPTION
	<b>For MAYTAG</b>
<b>303778</b>	Y303778, 5600W; 240V
<b>307178</b>	5300W; 240V
<b>307179</b>	5600W; 240V
<b>307184</b>	5300W; 240V
<b>608615</b>	5300W; 240V
<b>608617</b>	5300W; 240V
<b>308612</b>	5300W; 240V
<b>308613</b>	5300W; 208V
<b>308614</b>	5600W; 240V
<b>308615</b>	5300W; 240V
<b>308617</b>	5300W; 240V
<b>303404</b>	5000 watt, 240 volts
<b>3-4837</b>	5000 watt, 208 volts
<b>35001247</b>	5300 watt, 240 volts



308612



303404

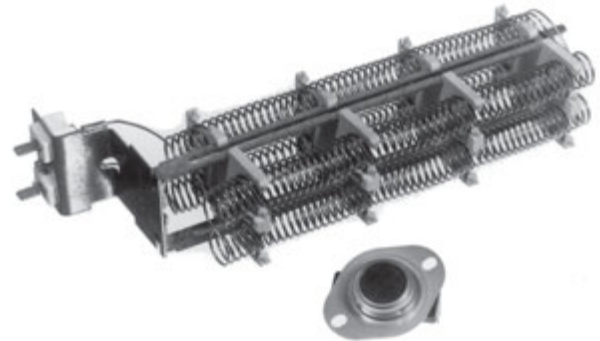


35001247



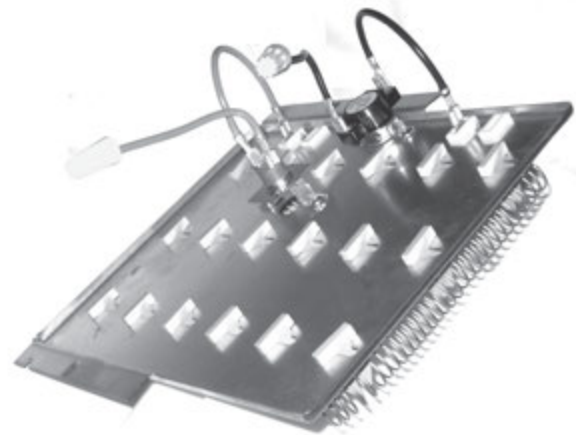
# ELECTRIC DRYER ELEMENTS

PART NO.	DESCRIPTION
	<b>For NORGE</b>
<b>LA1044</b>	4750 watt, 240 volts Complete element including L248-80OD hi-limit.
<b>31001499</b>	4750 watt, 240 volts
<b>N53-0771</b>	Hi-limit T-stat L248-80OD

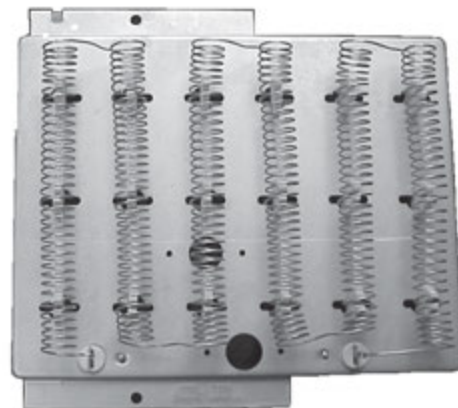


LA1044

PART NO.	DESCRIPTION
	<b>For SPEED QUEEN</b>
<b>61927</b>	5000 watt, 240 volts
<b>61928</b>	4750 watt, 208 volts
<b>61929</b>	4800 watt, 240 volts
<b>N490P3</b>	Thermal Fuse Kit
<b>NR9900489</b>	Thermal Fuse Kit



61927

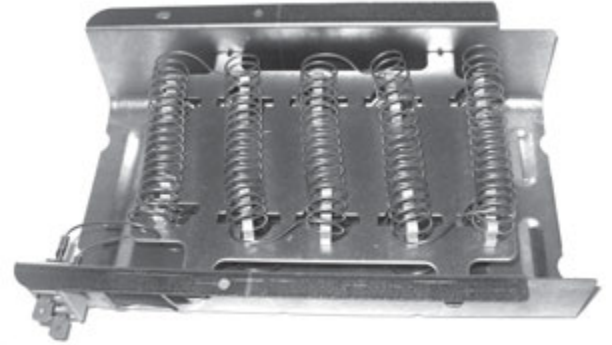


61927

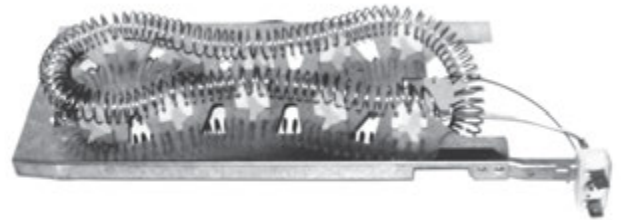


# ELECTRIC DRYER ELEMENTS

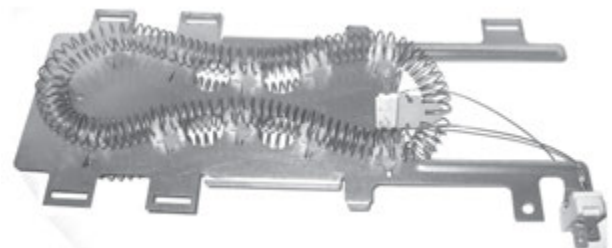
PART NO.	DESCRIPTION
	<b>For WHIRLPOOL-KENMORE</b>
<b>279838</b> Pat. No. 417,162 Pat. No. 495,298S	5400 watt, 240 volts
<b>279837</b> Pat. No. 417,162 Pat. No. 495,298S	5400 watt, 240 volts
<b>279843</b> Pat. No. 417,162 Pat. No. 495,298S	3000 watt, 240 volts
<b>3398062</b> Pat. No. 417,162 Pat. No. 495,298S	3000 watt, 240 volts
<b>3398064</b> Pat. No. 417,162 Pat. No. 495,298S	5400 watt, 240 volts
<b>3398065</b> Pat. No. 417,162 Pat. No. 495,298S	5600 watt, 240 volts
<b>3398066</b> Pat. No. 417,162 Pat. No. 495,298S	5000 watt, 240 volts
<b>3403585</b> Pat. No. 417,162 Pat. No. 495,298S	5400 watt, 240 volts
<b>3403591</b>	1200 watt, 110 volts
<b>3401338</b> Pat. No. 417,162 Pat. No. 495,298S	Dual wattage 5400W/2700W; 240 volts; complete element
<b>NEW 8573069</b>	Dual wattage 5400W/2700W; 240 volts; complete element
<b>3387747</b>	5400 watt, 240 volts
<b>3387748</b>	5600 watt, 240 volts
<b>3387749</b>	4600 watt, 240 volts
<b>NEW 8544771</b>	5400 watt, 240 volts
<b>NEW 35001247</b>	5300 watt, 240 volts
<b>35001119</b>	5300 watt, 240 volts element only (no housing)



279838



3387747

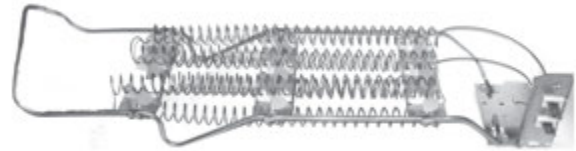


8544771

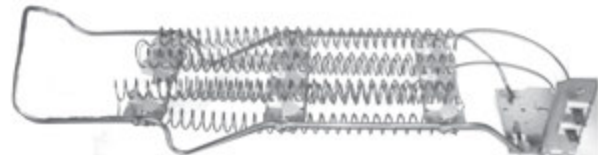


# ELECTRIC DRYER ELEMENTS

PART NO.	DESCRIPTION
<p><b>4391960</b> Pat. Nos. D495, 298S</p>	<p><b>For WHIRLPOOL-KENMORE</b></p> <p>5200 watt, 240 volts</p> <p>Replaces: 279698, 279247, 279248, 279249, 279598, 337378, 337429, 337430, 339655, 340468, 340469, 348773, 348774, 349542, 349543, 349544, 685182, 685942, 688628, 689805, 696324, 20010234, 20103149, 279455, 279218, 279410, 279411, 279478, 349545, 349546, 660933, 660965, 660982, 689980, 690241, 690983, 691724, 692758, 693061, 693062, 693295, 693297, 693298, 693299, 693300, 696579, 697290, 786077, 4319487, 20010234</p>
<p><b>279698</b></p>	<p>5200 watt, 240 volts</p> <p>Complete Element with adaptor</p>
<p><b>279455</b></p>	<p>5200 watt, 240 volts</p>
<p><b>696632</b></p>	<p>3600 watt, 240 volts</p>



4391960

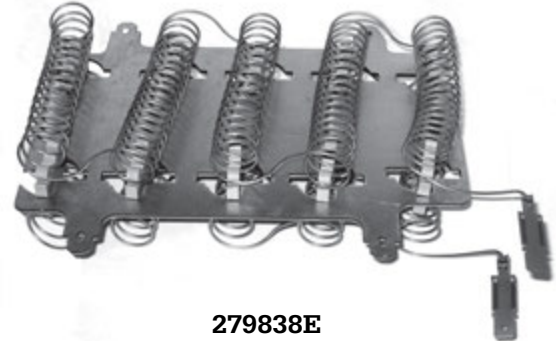


279698



# ELECTRIC DRYER ELEMENTS

PART NO.	DESCRIPTION
<b>For WHIRLPOOL</b>	
<p><b>279838E</b>                      Pat. No. 417,162                      Pat. No. 495,298S</p>	<p>5400 watt, 240 volts                      Element Insert                      (less outside wrapper)                      Replaces 279838, 3398064</p>
<p><b>279843E</b>                      Pat. No. 417,162                      Pat. No. 495,298S</p>	<p>3000 watt, 240 volts                      Element Insert                      (less outside wrapper)                      Replaces 279843, 3398062</p>
<p><b>3398062E</b>                      Pat. No. 417,162                      Pat. No. 495,298S</p>	<p>3000 watt, 240 volts                      Element Insert                      (less outside wrapper)                      Replaces 3398062</p>
<p><b>3398064E</b>                      Pat. No. 417,162                      Pat. No. 495,298S</p>	<p>5400 watt, 240 volts                      Element Insert                      (less outside wrapper)                      Replaces 3398064</p>
<p><b>3398065E</b>                      Pat. No. 417,162                      Pat. No. D495,298S</p>	<p>5600 watt, 240 volts                      Element Insert                      (less outside wrapper)                      Replaces 3398065</p>
<p><b>3398066E</b>                      Pat. No. 417,162                      Pat. No. D495,298S</p>	<p>5000 watt, 240 volts                      Element Insert                      (less outside wrapper)                      Replaces 3398066</p>
<p><b>3403585E</b>                      Pat. No. 417,162                      Pat. No. D495,298S</p>	<p>5400 watt, 240 volts                      Replaces 3403585</p>



**279838E**



# SPECIAL DRYER THERMOSTATS



PART NO.	DESCRIPTION
<b>LA1053 (ET 405)</b>	Hi-Limit Kit with Fuse and Thermal Limits (electric and gas)
<b>N53-0771 (ET 176)</b>	L248-80
<b>53-1182 (ET 403)</b>	Fuse for Gas and Electric
<b>N490P3 (ET 182)</b>	Thermostat and Thermal Fuse
<b>NR9900489</b>	Thermostat and Thermal Fuse Kit
<b>N279769 (ET 184)</b>	Thermal Cutoff Kit Replaces 3389946
<b>N279816</b>	Thermal Cutoff Kit Replaces 279816
<b>NEW 279973</b>	Thermostat and Fuse Kit
<b>N3390291</b>	L250-80 Hi-Limit
<b>N3392519 (ET 401)</b>	Thermal Fuse 3/16" Terminals Replaces 3392519.338651, and 694544



LA1053



N490P3



279769



279816



3392519





# SPECIAL DRYER THERMOSTATS

PART NO.	DESCRIPTION
<b>N3399848F</b>	Thermal Cutoff Kit 325°F fuse
<b>N3399849</b>	Thermal Fuse 1/4" Terminals
<b>N3390719 (ET 402)</b>	Thermal Fuse Replaces Whirlpool #279650, 3390719, 3389639, and Maytag #3-6604. Also replaces 690198, 660877, 688841, and 690798
<b>N510701</b>	L225 Auto Reset Hi Limit
<b>N194</b>	Thermal Cutoff Kit with 325°F fuse
<b>N197</b>	Limit and 309° Fuse Kit
<b>3977767 (ET 185)</b>	L221-65F
<b>40113801</b>	Thermal fuse, Speed Queen



N3399848



3390719



N510701



N197



3977767

# THERMOSTATS



PART NO.	DESCRIPTION
<b>N3387134</b>	Thermostat with Heat Anticipator Replaces Whirlpool 3387134, 3387135, 3387139 Replaces Maytag 30725



N3387134

PART NO.	DESCRIPTION
<b>338906</b>	Flame Sensor for Gas Dryers



338906

## ADJUSTABLE THERMOSTATS

Adjustable operating temperatures for greater service flexibility  
Dial knob; adjustable 40° range; 1/4" quick connect terminals  
25 A resistive at 120V; 10A resistive at 240V

	Adjustable Range
<b>AT012</b>	135-175
<b>AT013</b>	175-215
<b>AT014</b>	210-250
<b>AT015</b>	250-290
<b>AT021</b>	<b>F</b> 90-130
<b>AT022</b>	<b>F</b> 140-180



AT SERIES

## "L" SERIES THERMOSTATS

Single Pole-Single Throw

"CD" = closed disc		"OD" = open disc
L120-1CD	L200-4CD	L110-1OD
L130-1CD	L205-4CD	L115-3OD
L135-1CD	L210-4CD	L125-3OD
L140-1CD	L225-4CD	L140-3OD
L145-1CD	L230-4CD	L150-4OD
L150-1CD	L240-4CD	L160-4OD
L155-1CD	L250-5CD	L170-3OD
L160-2CD	L260-4CD	
L165-2CD	L275-5CD	
L170-2CD	L290-4CD	
L175-2CD	L300-5CD	
L180-1CD	L320-5CD	
L180-4CD	L340-5CD	
L190-4CD		



L SERIES



# DRYER ELEMENT RESTRING KITS

## For AMERICAN DRYER

PART NO.		
120010	120013	120012
120011	120014	

## For FRANKLIN

PART NO.		
8-1C	F134266	F137094C
8-38C	F134266-1	F141683C
D60135C	F136870C	F63527
F133285	F137022C	F63527-1

## For FRIGIDAIRE

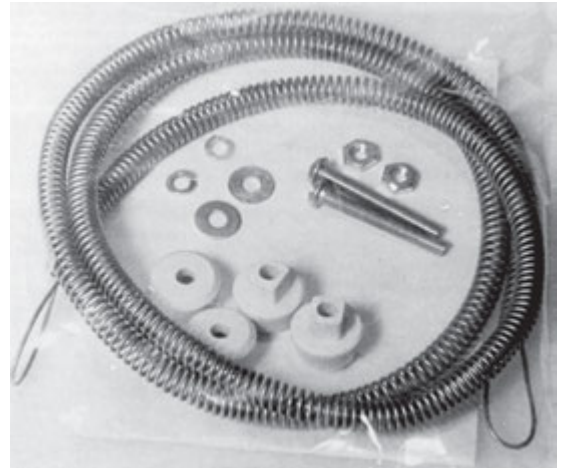
PART NO.		
3161050C	6563099C	8015855C
3204252C	7523552C	8027626C
3206873C	7525459C	8950035C
3937005C	7533742C	8950109C
3937010	7533743C	9948886C
3937065C	7533744C	9956777C
633668C	8001554C	
633897C	8006968C	

## For GENERAL ELECTRIC

PART NO.		
WE11M11C	WE11X72	WE11X99C
WE11M21C	WE11X80C	WE11X101C
WE11M22C	WE11X81	WE11X103C
WE11M23C	WE11X82C	WE11X104C
WE11M27C	WE11X83	WE11X203C
WE11X5014C	WE11X85C	WE11X260*
WE11X59	WE11X88C	WE11X261*
WE11X60	WE11X89C	WE11X10007C
WE11X60D*	WE11X90C	WE14X10015
WE11X61	WE11X91C	WE25M27C
WE11X61D*	WE11X92C	WE11X10004C
WE11X68	WE11X93C	WE11X10006C
WE11X71	WE11X95C	*Contains two coils

## For HUEBSCH

PART NO.		
250-21 M405259	251-24 M405253	252-24 M405256
250-24 M405261	251-46 M4303P3	252-46 M4341P3
250-46 M401235	251-55 M401242	252-55 M401247
251-21 M405230	251-60 M402749	



8006968



WE11X60D



WE11X203



# DRYER ELEMENT RESTRING KITS

## For MAYTAG

## For WCI



3-11946

PART NO.	
0250037C	3-11946
303778C	3-12532
307178C	3-13322
307184C	3-13369
308612C	3-13537
308614C	3-13538
308615C	3-13539
308616C	3-14503
31001746C	3-2000C
3101588C	3-3404C
3-11944	3-4837C
3-11945	Y303778C

PART NO.		
Q000142832	08004643C	5303161050C
Q000142836	08006968C	5303201130
Q000142866	08015795	5303204252C
Q000142885	08015855C	5303206873C
Q000171873	08950035	5303269829C
Q000616426	09948886C	5303276585
Q000622032	09948887C	5303937005C
Q000622034	131234600C	5303937010
K1030867C	131234900C	5303937065C
00633897C	131475300C	5306564848C
06563099C	3201130C	5307533742C
06564848C	3937010	5307533743C
06591048C	5300136143C	5308015795C
07521171C	5300142885	5308027626C
07523127C	5300171482	5308950109C
07523552C	5300171873	5309948886C
07525459C	5300234600	5309956777C
07533742C	5300622032	131475400C
07533743C	5300622034	131475600C
07533744C	5300635271C	131553900C
08001554C	53008001554	

## For NORGE



Q622032

PART NO.	
53-0180C	63-1394C
53-1641C	63-1395C
53-0920C	63-4265
60-1050C	63-5255
60-3161C	63-5259
60-3605C	63-6369
60-7505C	73-0077
60-8673C	73-0154

## For WHIRLPOOL/KENMORE



3937010

## For SPEED QUEEN

PART NO.	
51079C	56179C
52608C	61195C
52626C	61927C
56047C	

PART NO.		
229739C	279606C	3398064C
230227C	279698C	340003C
236292C	279838C	3403591C
239690C	279843C	340468C
239775C	297665C	340469C
239790C	298181C	4387020
239869C	299187C	4391960C
279247C	299188C	685592C
279248C	299189C	685942C
279249C	299190C	686019C
279250C	299191C	690241C
279251C	337365C	690983C
279337C	337378C	691724C
279411C	338212C	693298C
279455C	3387747C	696632C
279502C	3387748C	8544771C
279506C	3387749C	
279559C	339655C	
279598C	3398062C	

## For WESTINGHOUSE

PART NO.	
Q142836	Q48418
Q142885	Q616426
Q171873	Q622032
Q39585C	Q622034
Q39587C	



# SNAP-ACTING TEMPERATURE CONTROLS

## THERMOSTATS

Normally closed thermostats which open on temperature rise. All units have 1/4" quick-connect terminals. All units are U.L. recognized and C.S.A. certified. Resistive heater load: 25 amps at 240V; 12.5 amps at 277V; 12.5 amps at 480V.



L Series

## "L" SERIES THERMOSTATS

Single Pole-Single Throw

"CD" = closed disc		"OD" = open disc
L120-1CD	L180-4CD	L110-2.5OD
L130-1CD	L190-4CD	L115-3OD
L135-1CD	L200-4CD	L120-1.5OD
L135-3CD	L210-4CD	L125-3OD
L140-1CD	L225-4CD	L130-2.5OD
L145-1CD	L230-4CD	L135-3OD
L150-1CD	L240-4CD	L140-3OD
L155-1CD	L250-5CD	L145-3.5OD
L155-2CD	L260-4CD	L150-4OD
L160-2CD	L275-5CD	L160-4OD
L165-2CD	L290-4CD	L170-3OD
L170-2CD	L300-5CD	
L175-2CD	L320-5CD	
L180-1CD	L340-5CD	

## REPLACEMENT FUSE FOR DUCT HEATERS

Fits many electric duct heaters including Warren 300°F fuse link; 1/4" quick connects - most popular. Also available in other temperatures and/or 5/16" QC





# ELECTRIC HEAT RESTRING KITS

## STRIP HEAT RESTRING KITS

Quality restrings for electric strip heater repair. Each kit contains one close-wound coil with terminal bolts attached, two sets of ceramic terminal bushings, four hex nuts, two lock and two flat washers. Coils fit ceramic insulators with 3/8" inside diameter openings. For larger coils, see next page or call us for special needs. Users/installers are responsible for the correct selection, application, and installation of our products.

PART NO.	STRETCH MAX./MIN.	DH SERIES NO.	WATTS @ 480 VOLTS
48100	21"/68"	DH510-3	1000
48200	75"/28"	DH502-3	2000
48250	83"/29"	DH503-3	2500
48300	98"/34"	DH507-3	3000
48350	120"/42"	DH501-3	3500
48400	148"/52"	DH506-3	4000
48450	132"/46"	DH505-3	4500
48500	176"/62"	DH500-3	5000
48600	205"/72"	DH534-3	6000
48660	187"/65"	DH520-3	6600
48800	54"/180"	DH580-3	8000
481000	126"/420"	DH1000-3	10000

PART NO.	STRETCH MAX./MIN.	DH SERIES NO.	WATTS @ 240 VOLTS	WATTS @ 208 VOLTS
24500	130"/45"	DH500C	5000	3756
24501	130"/45"	DH500 w/fuse	5000	3756
24100	36"/13"	DH510	1000	751
24150	49"/17"	DH504	1500	1127
24200	74"/26"	DH502	2000	1502
24250	88"/31"	DH503	2500	1878
24275	110"/30"	DH508	2750	2063
24300	103"/37"	DH507	3000	2253
24330	128"/43"	DH556	3300	2479
24350	145"/50"	DH501	3500	2629
24375	29"/98"	DH535	3750	2816
24400	114"/40"	DH506	4000	3004
24425	128"/45"	DH511	4200	3155
24450	121"/42"	DH505	4500	3380
24466	137"/48"	DH516	4666	3505
24475	134"/47"	DH512	4750	3568
24550	42"/140"	DH550	5500	4131
24560	160"/60"	DH560	5600	4206
24600	156"/54"	DH534	6000	4507
24660	202"/71"	DH520	6600	4957
24750	41"/135"	DH575	7500	5633
24800	215"/65"	DH580	8000	6000



PART NO.	STRETCH MAX./MIN.	DH SERIES NO.	WATTS @ 277 VOLTS	WATTS @ 240 VOLTS
27500	170"/60"	DH500-4	5000	3756
27200	75"/27"	DH502-4	2000	1501
27250	79"/28"	DH503-4	2500	1877
27300	99"/34"	DH507-4	3000	2252
27350	117"/41"	DH501-4	3500	2629
27360	154"/59"	DH360-277	3600	2702
27400	153"/54"	DH506-4	4000	3003
27450	136"/48"	DH505-4	4500	3378
27600	45"/150"	DH534-4	6000	4505
27750	51"/173"	DH575-4	7500	5630





# ELECTRIC HEAT RESTRING KITS

## LARGE DIAMETER COILS

Large diameter coils for use in many newer furnaces, strip heaters, duct heaters, air handlers, commercial heat exchangers, wall heaters, etc. **STANDARD kits come with attached bolts. SPECIFY if 1/4" or 5/16" quick-connect terminals are needed.** Any wattage and voltage available. If your requirement is not listed, please call and we will help you with the correct element. Give us the watts, volts, coil O.D., stretched length, and application.



PART NO.	WATTS @ 240V	WATTS @ 208V	O.D. INCH	STRETCH MAX/MIN
24500435	5000	3750	7/16	102"/30"
24350435	3500	2625	7/16	30"/100"
24300435	3000	2250	7/16	73"/23"
24150435	1500	1125	7/16	51"/16"
24800500	8000	6000	1/2	96"/32"
24600500	6000	4500	1/2	96"/31"
24560500	5600	4200	1/2	99"/33"
24500500	5000	3750	1/2	90"/30"
24466500	4666	3500	1/2	72"/24"
24450500	4500	3375	1/2	75"/24"
24400500	4000	3000	1/2	84"/28"
24350500	3500	2625	1/2	65"/18"
24330500	3300	2475	1/2	54"/18"
24200500	2000	1500	1/2	15"/45"
24250500	2500	1875	1/2	15"/50"
24275500	2750	2063	1/2	69"/23"
24800625	8000	6000	5/8	75"/25"
24600625	6000	4500	5/8	72"/24"
24560625	5600	4200	5/8	76"/25"
24500625	5000	3750	5/8	70"/25"
24475625	4750	3563	5/8	79"/26"
24450625	4500	3375	5/8	66"/22"
24425625	4250	3188	5/8	70"/23"
24400625	4000	3000	5/8	75"/23"
24300625	3000	2253	5/8	58"/20"
24275625	2750	2063	5/8	57"/18"
24660750	6600	4950	3/4	73"/24"
24600750	6000	4500	3/4	20"/63"
24560750	5600	4200	3/4	20"/63"
24500750	5000	3750	3/4	60"/20"
24425750	4250	3188	3/4	57"/19"
24475750	4750	3563	3/4	66"/22"
24400750	4000	3000	3/4	18"/54"
24350750	3500	2625	3/4	16"/50"
24300750	3000	2250	3/4	14"/44"
24150750	1500	1125	3/4	21"/62"

PART NO.	WATTS @ 480V		O.D. INCH	STRETCH MAX/MIN
48500435	5000		7/16	110"/30"
48450435	4500		7/16	125"/33"
48400435	4000		7/16	102"/34"
48350435	3500		7/16	107"/30"
48600500	6000		1/2	126"/42"
48500500	5000		1/2	95"/26"
48450500	4500		1/2	95"/33"
48660625	6600		5/8	129"/43"
48600625	6000		5/8	103"/34"
48500625	5000		5/8	66"/20"

PART NO.	WATTS @ 277V	WATTS @ 240V	O.D. INCH	STRETCH MAX/MIN
27350435	3500	2628	7/16	27"/90"
27300435	3000	2252	7/16	63"/20"
27250435	2500	1877	7/16	70"/22"
27450500	4500	3378	1/2	108"/32"
27350500	3500	2627	1/2	66"/20"
27300500	3000	2252	1/2	55"/18"
27250500	2500	1877	1/2	66"/20"
27500625	5000	3753	5/8	75"/20"
27400625	4000	3003	5/8	99"/33"
27350625	3500	2627	5/8	60"/20"
27500750	5000	3753	3/4	64"/17"
27450750	4500	3378	3/4	79"/23"
27400750	4000	3003	3/4	81"/27"
27200750	2000	1501	3/4	21"/62"





# ELECTRIC HEAT RESTRING KITS

PART NO.	RATING	APPLICATION	COILS PER UNIT	PART # SINGLE COIL
<b>BRYANT</b>				
67523B1	5KW, 240V	960D Furnace		67523B1C
67523B2	3KW, 240V	960D Furnace		67523B2C
D544	5.28KW, 240V	Pkg. Heat Pump, All Stages		D544C
<b>CADET</b>				
FW152	1.5KW, 240V	Wall Heater .25 OD		FW152C
FW302	3KW, 240V	Wall Heater .25 OD		FW302C
<b>CARRIER</b>				
3-05332-4	5KW, 240V	3-05332-4 Assembly		3-05332-4C
40GC401	4KW, 240V	40GC401154 Assembly		40GC401C
50DQ00010	5.5KW, 220V			50DQ00010C
50-EE0418	5KW, 240V	50-EE0418 Assembly		50-EE0418C
52BQ401404	3.5KW, 240V	Air Handler		52BQ401404C
<b>CLIMATROL</b>				
11-9714	10KW, 240V	Furnace	2	11-9714C
<b>CLIMATE MASTER</b>				
688634-02	4KW, 208V	688634-02 Assembly		688634-02C
<b>COLEMAN</b>				
3500-405A	4.8KW, 240V		1	3500-405AC
3500-406	5.6KW, 240V		1	3500-406C
3500-410A	9.6KW, 240V		2	3500-410AC
4010-326	5KW, 240V	Furnace		4010-326C
6806	5KW, 240V	Furnace		6806C
432721	15KW, 240V		3	432721C
<b>CRAFT</b>				
CF3201	1.5KW, 115V	HE4004-04A/21-2662-06		CF3201C
CF3202	2.5KW, 230V	HE4001/21-2662-03		CF3202C
CF3203	3KW, 230V	HE4002-02A/21-2662-00		CF3203C
CF3204	4KW, 230V	HE4003/21-2662-02		CF3204C
<b>FEDDERS</b>				
11-15	5KW, 240V	11-15-0112D-002 Assembly		11-15C
19-12	3KW, 240V	19-12-0586-0001 Assembly		19-12C
19-15	5KW, 240V	19-15-370D-024 Assembly		19-15C
30-35	5KW, 240V	30-35-0023D-004/002 Assembly		30-35C
CWX102	9.6KW, 240V	CWX102J1B Duct Heater		CWX102C
<b>FEDERAL PACIFIC</b>				
M1750	.75KW, 120V	Wall Heater		M1750C
M11000	1KW, 120V	Wall Heaters		M11000C
M11500	1.5KW, 120V	Wall Heaters		M11500C
M21000	1KW, 240V	Wall Heaters		M21000C
M21500	1.5KW, 240V	Wall Heaters		M21500C
<b>FRIGIDAIRE</b>				
6573877	3KW, 208V	Commercial A/C		6573877C-



# ELECTRIC HEAT RESTRING KITS

PART NO.	RATING	APPLICATION	COILS PER UNIT	PART # SINGLE COIL
<b>GE/TRANE</b>				
AH-H10	3.22KW, 230V	WJ70X361		AH-H10C
AY96	9.6KW, 240V	Heat Pumps		AY96C
B96X243A	5KW, 240V		6	B96X243AC
D55747-2	5KW, 265V	D55747-2 Assembly	2	D55747-2C
D68371-5	3.5KW, 230V	D68371-5 Assembly	2	D68371-5C
D68998-1	3.5KW, 230V	D68998-1 Assembly	2	D68998-1C
D68998-5	5KW, 230V	D68998-5 Assembly		D68998-5C
D68998-6	5KW, 265V	D68998-6 Assembly	2	D68998-6C
WP30X77	3.4KW, 230V/ 2.77KW,208V	Zoneline Heater		WP30X77C
WP70X37	3.4KW, 240V	Zoneline Heaters	2	WP70X37C
WP70X40	5KW, 240V	Zoneline Heaters	2	WP70X40C
WP70X42	3KW, 265V	Zoneline Heaters	2	WP70X42C
WP70X79	3KW, 230V	Zoneline Heaters		WP70X79C
WP70X80	3KW, 230V	Zoneline Heaters		WP70X80C
WP70X100	5KW, 265V	Zoneline Heaters	3	WP70X100C
WJ70X231	3.4KW, 240V	Zoneline Heaters		WJ70X231C
WJ70X361	3.22KW, 230V	Zoneline Heater		WJ70X361C
WJ70X379	3KW, 230V	Zoneline Heaters		WJ70X379C
WJ70X380	3KW, 230V	Zoneline Heaters		WJ70X380C
WP70X10008	3.5KW, 240V	Zoneline Heaters		WP70X10008C
035A3B	3.33KW, 220V	Furnace	3	035A3BC
519300	12KW, 240V	21LJ-040A1C	8	519300C
<b>GOODMAN</b>				
AWB2408D	7.3KW, 240V		1	AWB2408DC
<b>JANITROL</b>				
64F50	4.8KW, 240V	All Furnaces		64F50C
<b>LENNOX</b>				
95C14	5KW, 480V/277V	Furnace		95C14C

MILLER SKU#	UNIT RATING	APPLICATION	RATING PER COIL	COILS PER UNIT	PART # SINGLE COIL
<b>MILLER/INTERTHERM</b>					
912248	4.8KW	PBMC Series Air Handlers	4.8KW, 240V	1	912248C
912249	7.2KW	PBMC Series Air Handlers	3.6KW, 240V	2	912249C
912250	9.6KW	PBMC Series Air Handlers	4.8KW, 240V	2	912250C
912251	14.4KW	PBMC Series Air Handlers	3.6KW, 240V	4	912251C
912252	4.8KW	PBMC Series Air Handlers	4.8KW, 240V	1	912252C
912253	7.2KW	PBMC Series Air Handlers	3.6KW, 240V	2	912253C
912254	9.6KW	PBMC Series Air Handlers	4.8KW, 240V	2	912254C
912255	14.4KW	PBMC Series Air Handlers	3.6KW, 240V	4	912255C
913251	8KW	BIBM Residential Air Handlers	4KW, 240V	2	913251C
913252	8KW	BIBM Residential Air Handlers	4KW, 240V	2	913252C



# ELECTRIC HEAT RESTRING KITS

MILLER SKU#	UNIT RATING	APPLICATION	RATING PER COIL	COILS PER UNIT	PART # SINGLE COIL
<b>MILLER/INTERTHERM</b>					
120539	10KW	10KW, 240V	5KW, 240V	2	120539C
120540	5KW	5KW, 240V	5KW, 240V	1	120540C
913277	15KW	BIBM Residential Air Handlers	5KW, 240V	3	913277C
913279	20KW	BIBM Residential Air Handlers	5KW, 240V	4	913279C
913311	5KW	BIBM Residential Air Handlers	5KW, 240V	1	913311C
913312	10KW	BIBM Residential Air Handlers	5KW, 240V	2	913312C
913313	15KW	BIBM Residential Air Handlers	5KW, 240V	3	913313C
913314	20KW	BIBM Residential Air Handlers	5KW, 240V	4	913314C
913315	5KW	BIBM Residential Air Handlers	5KW, 240V	1	913315C
913316	10KW	BIBM Residential Air Handlers	5KW, 240V	2	913316C
913246	10KW	BIBM Residential Air Handlers	5KW, 240V	2	913246C
913249	10KW	BIBM Residential Air Handlers	5KW, 240V	2	913249C
HME-005	5KW	HME Package QISA Heat Pumps	5KW, 240V	1	HME-005C
HME-008	7.2KW	HME Package QISA Heat Pumps	3.6KW, 240V	2	HME-008C
HME-010	10KW	HME Package QISA Heat Pumps	5KW, 240V	2	HME-010C
HME-015	15KW	HME Package QISA Heat Pumps	5KW, 240V	3	HME-015C
914946	4.8KW	H3HK-005	4.8KW, 240V	1	914946C
914947	7.5KW	H3HK-008	3.7KW, 240V	2	914947C
914948	10KW	H3HK-010	5KW, 240V	2	914948C
914949	15KW	H3HK-015	4.8KW, 240V	3	914949C
914950	20KW	H3HK-020	5KW, 240V	4	914950C
FEH015HA	5KW	FEH015HA Assembly	5KW, 240V		FEH015HAC
270004	5KW	270004 Assembly	5KW, 240V		270004C

PART NO.	RATING	APPLICATION	COILS PER UNIT	PART # SINGLE COIL
<b>RHEEM</b>				
48500435	5KW, 480V	RXSEAA40DD Package Heat Strip		48500435
<b>TUTCO</b>				
21-2530-00	10KW		2	21-2530-00C
DHC3409-12.0-3p	12KW, 480V		3	27400
<b>WESTINGHOUSE</b>				
350A113H45	2KW, 265V	Combination Units		350A113H45C
350A113H46	3KW, 265V	Combination Units		350A113H46C
<b>WHIRLPOOL</b>				
995675	3.19KW, 240V		1	995675C
<b>YORK</b>				
PT-5	5KW, 235V	Furnace		PT-5C
PT-6	6KW, 235V	Furnace		PT-6C
Y27600NF	6KW, 460V	025-27709-705	6	Y27600NF
Y48500PP	5KW, 480V	025-30340-000	1	Y48500PP

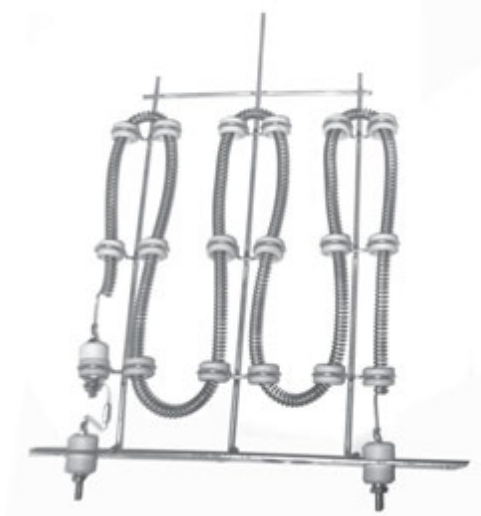
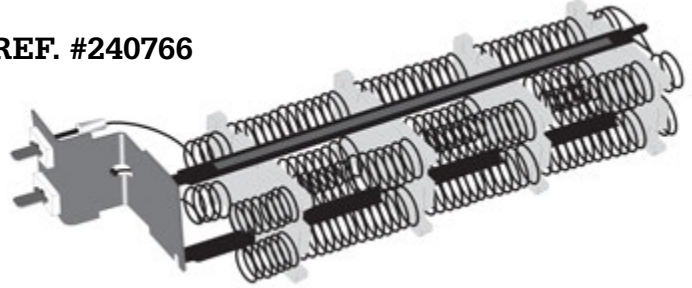


# ELEMENTS FOR ELECTRIC HEAT

## ELEMENTS FOR ELECTRIC HEAT

240V; 1500W  
Packaged Terminal Unit  
McQuay Model #BC65D03AAA0A

REF. #240766



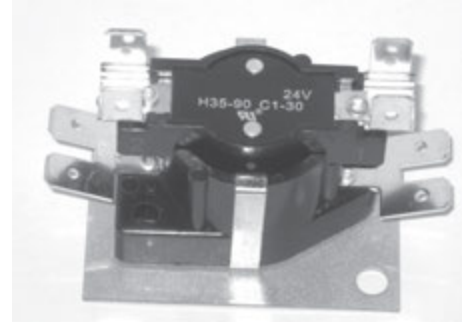
HS5000

PART NO.	DESCRIPTION
<b>HS5000</b>	240V; 5KW Fits Climate Control, First Company, Sundial, and other air handlers
<b>HS6000</b>	240V; 6KW

# ELECTRIC HEAT SEQUENCERS



NS103



NS102

## CROSS REFERENCE

NAPCO	Gem	Supco	Jepco	White-Rodgers	Mars
NS 101	GS101	Q101		24A34-1	33241
NS 102	GS102	Q102	TD-03	24A34-2	33242
NS 103	GS103	Q103	TD-12	24A34-3	33244
NS 104	GS104	Q104	TD-34	24A34-4	33245
NS 105	GS105	Q105	51172-32-2	24A34-5	33232
NS 106	GS106	Q106	51172-33-1	24A34-6	33233
NS 107	GS107	Q107			
NS 211S			51172-22-1	24A52-109	
NS 212S			TD-09	24A52-101	
NS 246					33246
NS 247	GS108	Q108		24A-15	33247
NS 265			TD-212		33265



# ELECTRIC HEAT SEQUENCERS

**NS** series sequencers (time delay relays) are used to stage fan and/or heating elements in electric furnaces, heat pumps, central air conditioning, gas furnaces, commercial refrigeration, etc. Sequencers are marked with an “H” for ON time and “C” for OFF time. This selection offers the most economical replacements for switching 25 amp elements and blowers. Ratings: 30 amp resistive @ 240V or 23 amp resistive and 7 FLA, or 23 FLA, 88 LRA @ 277V.

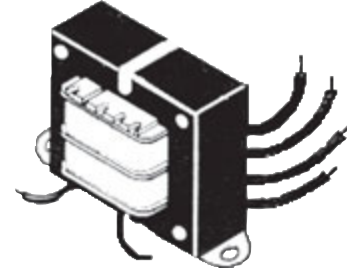
NAPCO PART NO.	CONTROL VOLTS	SWITCHES	MAKE & BREAK TIME IN SECONDS	
			ON	OFF
<b>NS 101</b>	24	SPST	1-24	45-110
<b>NS 102</b>	24	SPST	30-90	1-30
<b>NS 103</b> Replaces B1256504	24	DPST	1-24	45-110
<b>NS 104</b>	24	DPST	30-70	1-40
<b>NS 105</b> Replaces B12565	24	3 switches	Switch 1 and 2 First On Last Off 1-24 45-75	Switch 3 Last On First Off 35-90 1-30
<b>NS 106</b>	24	4 switches	Switch 1 and 2 First On Last Off 1-24 45-75	Switch 3 and 4 Last On First Off 30-70 1-40
<b>NS 107</b>	24	5 switches	1-110	1-110
<b>NS 211S</b>	24	DP/staged	30-90	1-40
<b>NS 212S</b>	24	DP/staged	1-25	50-110
<b>NS 246</b>	24	DPST	1-60	1-45
<b>NS 247</b> Replaces Goodman B1370738 and Janitrol	24	SPDT	1-24	65-115
<b>NS 265</b>	240	DPST	30-110	15-65

# TRANSFORMERS



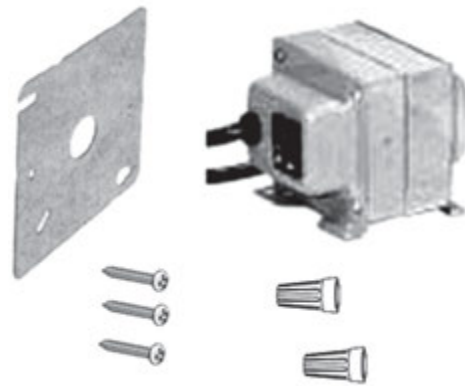
## TRANSFORMERS

Designed to provide power source for control circuit for heating, air-conditioning, or refrigeration systems. Primary color coded leads.



NT401

PART NO.	DESCRIPTION
<b>NT401</b>	40VA; 50/60 cycle 120/208/240 primary voltage 24V secondary voltage Foot mount, open construction
<b>NT481</b>	48VA 120/208/240 primary voltage 24/12/2.5 secondary voltage Multi-mount, supplied with mounting plate and hardware



NT481

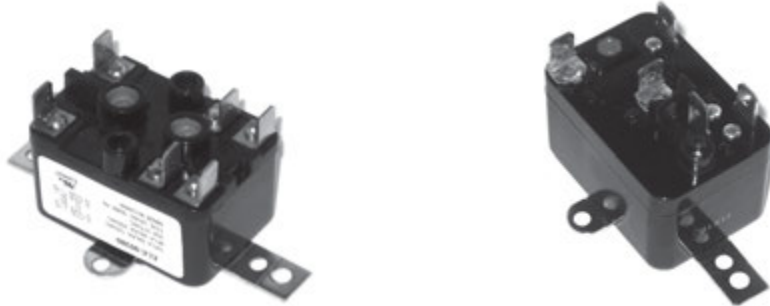




# FAN RELAYS

## FAN RELAYS

Enclosed relays for fan motors and other general purpose applications.



84 PART NO.	184 PART NO.	COIL VOLTS	WIRES	SWITCH
<b>90290</b>		24	4	SPST N.O.
<b>90293</b>		24	5	SPDT
<b>90294</b>		120	5	SPDT
<b>90295</b>		208/230	5	SPDT
	<b>90360</b>	24	4	SPST
	<b>90370</b>	24	5	SPDT
	<b>90372</b>	120	5	SPDT
	<b>90374</b>	208/230	5	SPDT
	<b>90380</b>	24	6	2P-1N.O., 1N.C.
	<b>90382</b>	120	6	2P-1N.O., 1N.C.
	<b>90384</b>	208/230	6	2P-1N.O., 1N.C.

125 VAC; 18A Resistive, 12 FLA, 60 LRA 240/277 VAC; 18A Resistive, 8 FLA, 48 LRA

SPST-NO, SPST-NC, SPDT, 1 NO/1 NC Contacts

Coil Voltage 24, 120, 208/240, 77 VAC

Pilot Ratings: 3A, 277 VAC General purpose, 250 VA @ 250 VAC, 277 VA @ 277 VAC, 125 VA @ 125 VAC

# SWITCHING RELAYS



## GENERAL PURPOSE SWITCHING RELAYS

Switching relays, double pole, double throw, suitable for general purpose applications, such as heat pumps, heating and air-conditioning, refrigeration, fan controls, vending machines, and other applications. Our relays are available in 24, 110/120, and 208/240 coil volts with various combinations of power. 50/60 Hz

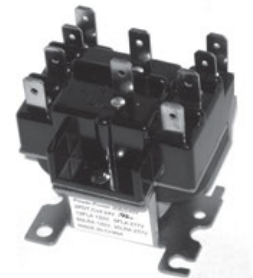
### FEATURES:

Double .25" quick connect terminals on coil

Compact size: 2½" x 1⅞" x 2¼"

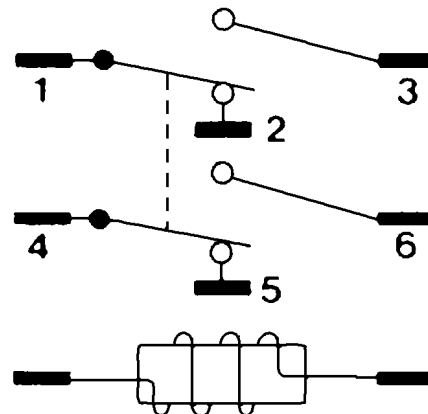
Designed for easy replacement of competitive relays, including universal mounting bracket

UL recognized



90340

## GENERAL PURPOSE SWITCHING RELAYS



	COIL VOLTAGE	TERMINALS 1-2-3	TERMINALS 4-5-6
90340	24		
90341	110 / 120	POWER	POWER
90342	208 / 240		

## CONTACT RATING

	POWER	
	120V	208/240V
Full Load Amps	12	6
Resistive Amps @277VAC	15	15
Locked Rotor Amps	60	35
Horsepower	¾	¾



# FAN SWITCHES - MANUAL RESET

## FAN SWITCHES

Normally open, the **NFN** series automatic reset fan switches are designed for use in warm air streams or surface mounted applications. Fan switches close on temperature rise to start a delayed fan or hold it on after the heater has shut down, insuring that no cold air is circulated through the system. Ratings are 16 FLA, 60 LRA at 240V, 30,000 cycles.



NFN 110

### “NFN” SERIES FAN SWITCHES

NAPCO PART NO.	CLOSE °F.	OPEN °F.
<b>NFN 110</b>	110	90
<b>NFN 120</b>	120	100
<b>NFN 130</b>	130	100
<b>NFN 140</b>	140	120
<b>NFN 150</b>	150	130
<b>NFN 160</b>	160	140
<b>NFN 180</b>	180	160

## MANUAL RESETS

The **NMR** series are secondary protective devices which open on temperature rise. The manual reset can be reset after proper cool-down of the switch. All models are UL and C.S.A. Listed.



NMR130

### RESETS

PART NO.	DESCRIPTION
<b>NMR 150-OD</b>	Open disc; 1 Pole, 25 amp
<b>NMR 175-CD</b>	Closed disc; 1 Pole, 25 amp
<b>NMR 220</b>	Closed disc; 1 Pole
<b>NMR 250</b>	Closed disc; 1 Pole

### FIRESTAT

PART NO.	DESCRIPTION
<b>NMR130</b>	1 Pole Flush Mount Open disc, 25 amp Resistive at 277V

# THERMAL CUT-OFFS (Fusible Links)



Thermal cut-offs provide protection against overheating when the design limit temperature of a circuit is reached. Thermal cut-offs are temperature sensitive, one-time devices which open the circuit when operating temperatures exceed the rated temperature of the cutoff. Rated 22 amps, up to 277V.

## IN-LINE LINKS

PART NO.	OPEN °F.	OPEN °C.
<b>NTC 168</b>	168	76
<b>NTC 178</b>	178	80
<b>NTC 204</b>	204	96
<b>NTC 227</b>	227	108
<b>NTC 257</b>	257	127
<b>NTC 283</b>	283	144
<b>NTC 300</b>	300	150
<b>NTC 333</b>	333	170
<b>NTC 378</b>	378	192
<b>NTC 438</b>	438	225
<b>NTC 468</b>	468	243

Thermal cut-offs provide protection against overheating when the design limit temperature of a circuit is reached. Thermal cut-offs are temperature sensitive, one-time devices which open the circuit when operating temperatures exceed the rated temperature of the cutoff. Rated 22 amps, up to 277V.



NTC Series

Fusible link assemblies are safety devices mounted in ceramic holders. **NTCK** series features round ceramic holders with mounting strap to connect to the element terminal and one 1/4" quick connect. **NTCD** series are tear drop shaped ceramic holders with a screw mounting hole at the small end and two 1/4" quick connects for convenient hook-up. Rated 22 amps, up to 277V.

## FACE PLATE LINKS

PART NO.	PART NO.	OPEN °F.
<b>NTCK 194</b>		191
<b>NTCK 204</b>	<b>NTCD 204</b>	204
<b>NTCK 218</b>	<b>NTCD 218</b>	218
<b>NTCK 227</b>	<b>NTCD 227</b>	227
<b>NTCK 257</b>	<b>NTCD 257</b>	257
<b>NTCK 300</b>	<b>NTCD 300</b>	300
<b>NTCK 333</b>	<b>NTCD 333</b>	333
	<b>NTCD 378</b>	378
	<b>NTCD 415</b>	415



D Series



K Series



2B9 Adaptor

2B9 black phenolic-based fuses no longer made. Use 2B9 adaptor and NTCD series link of same temperature.



# ROLLOUT SWITCHES

Automatic and manual reset Rollout Switches used as a safety device in gas furnaces, unit heaters and roof top units.

## MANUAL ROLLOUT

1/2" SPST Limit T-stats  
 SPST; manual resets  
 Vertical 1/4" terminals

PART NO.	CUT OUT
RL130	130
RL135	135
RL220	220
RL230	230
RL240	240
RL250	250
RL260	260
RL300	300
RL350	350



RL Manual Reset

## AUTOMATIC ROLLOUT

1/2" T-stats  
 SPST; Limit T-stats  
 1/4" terminals; 45°

PART NO.	CUT OUT	CUT IN
LS140	140	100
LS145	145	105
LS150	150	110
LS155	155	115
LS160	160	120
LS165	165	125
LS170	170	130
LS175	175	135
LS180	180	140
LS200	200	160
LS250	250	200
LS255	255	205
LS265	265	215
LS275	275	225
LS285	285	235
LS295	295	245
LS300	300	250



LS Rollout Automatic

# SNAP-ACTING TEMPERATURE CONTROLS



## ADJUSTABLE THERMOSTAT

Adjustable operating temperatures for greater service flexibility  
Dial knob; adjustable 40° range; ¼" quick connect terminals  
25A resistive @120V; 10A resistive @240V. Thermostats SPST  
open on temperature rise; Fan controls close on rise.

PART NO.	ADJUSTABLE RANGE
AT012	135-175
AT013	175-215
AT014	210-250
AT015	250-290
AT021	F 90-130
AT022	F 140-180



AT012

## DEFROST TERMINATORS

Temperature control used in refrigeration applications, such as defrost termination and ice maker controls, heat pumps, air-conditioning equipment, and dehumidifiers. Sealed construction and 24" leads.

PART NO.	OPEN °F	CLOSE °F
<b>WITH CLIP</b>		
CL45	45	25
CL50	50	30
CL55	55	35
CL60	60	40
<b>NO CLIP</b>		
L45	45	25
L50	50	30
L55	55	35
L60	60	40
L70	70	50



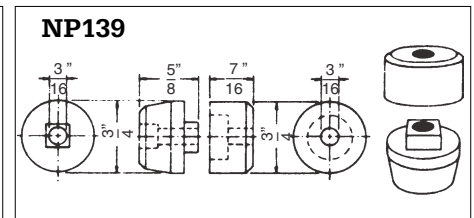
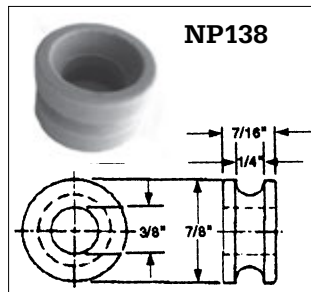
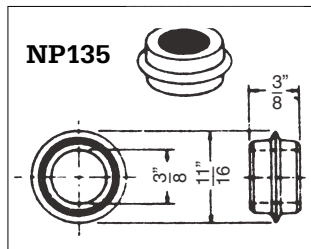
CL Defrost Terminator with Clip



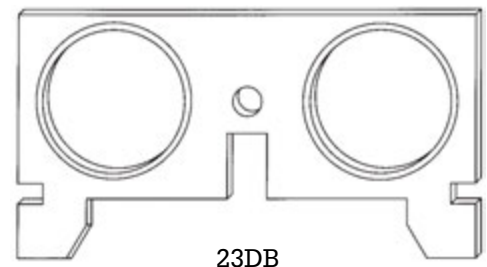
Defrost Terminator

## INSULATORS

PART NO.	O.D.	I.D.	WIDTH
<b>NP120</b>	Terminal Block for two 1/4" or 5/16" Quick-Connect Terminals		
<b>NP131</b>	3/4"	7/16"	11/16"
<b>NP133</b>	3/4"	7/16"	1/2"
<b>NP134</b>	9/16"	3/8"	3/4"
<b>NP135</b>	11/16"	3/8"	3/8"
<b>NP138</b>	11/16"	3/8"	7/16"
<b>NP139</b>	3/4"	3/16"	2 Piece Set



PART NO.	DESCRIPTION
<b>279457</b>	<b>ADAPTOR KIT</b> Adapts older models to 5/16" quick-connect element.
<b>61399-1</b>	Female Spade Terminal - 5/16".
<b>63300-1</b>	Male Spade Terminal - 5/16".
<b>63301-1</b>	Quick-Connect Terminal - 1/4".
<b>23DB</b>	Bracket with Insulators





# CROSS REFERENCE



	NAPCO #
DE138	303404
DE148	LA1044
DE164	61927
DE177	4391960
DE178	4391960
DE179	4391960
DE180	4391960
DE189	4391960
DE193	4391960
DE195	4391960
DE204	9956777C
DE205	8006968C
DE264	56047C
DE289	337378C
DE301	F63527C
DE302	F63527-1C
DE307	Q142836C
DE308	Q142885C
DE315	WE11X60C
DE316	WE11X61C
DE325	3-11944C
DE326	3-11946C
DE327	3-13538C
DE332	63-4265C
DE333	WE11X103C
DE334	WE11M21C
DE335	5300622032
DE336	5300622034
DE698	279698, 4391960
DE838	279838E

	NAPCO #
DH220022	24200
DH230019	24300
DH233319	24330
DH240018	24400
DH250016	24500
DH266615	24660
DH5000	24501
DHB300	NTC300
ET176	N53-0771
ET182	N490P3
ET184	N279769
ET185	3977767
ET401	N3392519
ET402	N3390719
ET405	LA1053
L15525W	3387134
GS101	NS101
GS102	NS102
GS103	NS103
GS104	NS104
GS105	NS105
GS106	NS106
GS107	NS107
GS108	NS247
PB135	NP135
PB138	NP138
PB139	NP139F, NP139M



# NOTES

---

# NOTES

---

