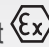


BH

Off-Center Load Cell

DISTINCTIVE FEATURES

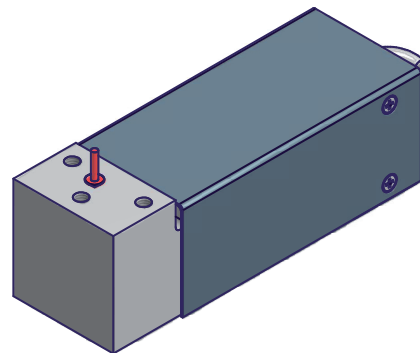
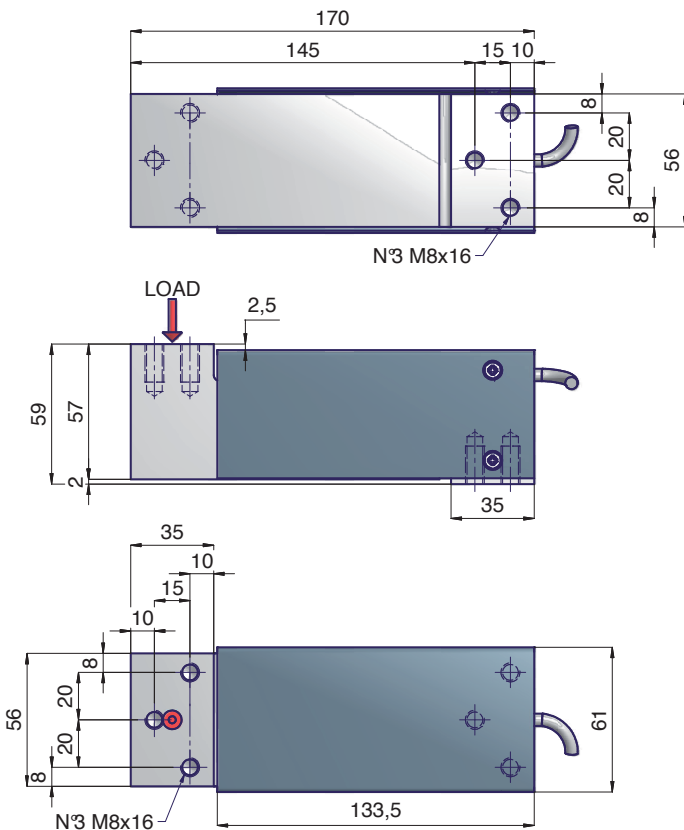
- Capacities: 50 kg to 150 kg
- Maximum platform size 600x600mm
- Protection class IP65 (EN 60529)
- High accuracy
- On request  II 3D (zone 22) version

APPLICATION

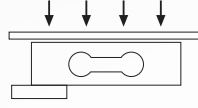
The single point load cells mod. BH are parallelogram transducers, mainly used in the construction of weighing platform. The off center load performance allows a maximum platform size of 600x600mm.



DIMENSIONS (mm)



Capacities	Standard	OIML	ATEX
50 kg	●		●
75 kg	●		●
100 kg	●		●
150 kg	●		●



BH

Off-Center Load Cell

TECHNICAL DATA

Accuracy class	Standard	Accuracy class	Standard
Capacities fs (E _{max})	50 ÷ 150 kg	Temp. effect on zero balance (5°C)	<± 0,020% fs
Plate	600 x 600 mm	Temp. effect on rated output (5°C)	<± 0,010% fs
Rated output (C _n)	2 mV/V ± 10%	Compensated temperature range	-10°C ÷ +40°C
Nominal excitation range	5 ÷ 10V	Operating temperature range	-20°C ÷ +70°C
Maximum excitation	15V	Maximum safe load	150% fs
Zero balance output	± 0,02 mV/V	Ultimate load	>300% fs
Input resistance	400 ± 25 Ω	Protection class (EN60529)	IP65
Output resistance	350 ± 2 Ω	Material	Alluminium
Insulation resistance	> 5 GΩ	Displacement at nominal load	0,4 ÷ 0,5 mm
Combined error	<± 0,025% fs	Fixing screws tightening torque	25 Nm
Non repeatability	<± 0,015% fs	Weight	~ 1,2 kg
Creep 30 min.	<± 0,03% fs	Cable lenght	5m - 6 x 0,14 mm ²

WIRE DIAGRAM

