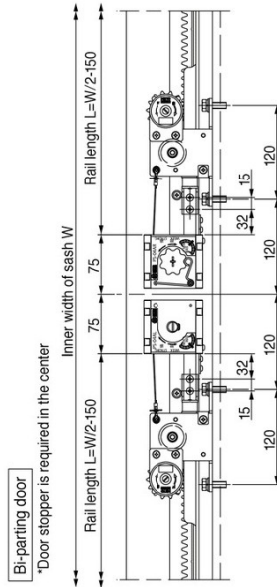
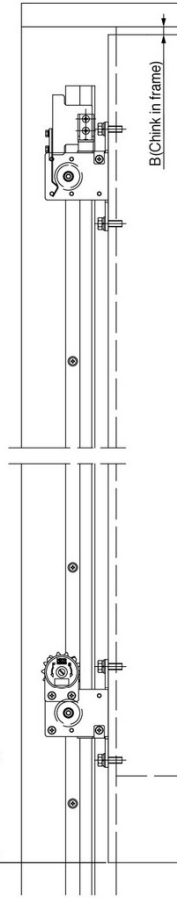
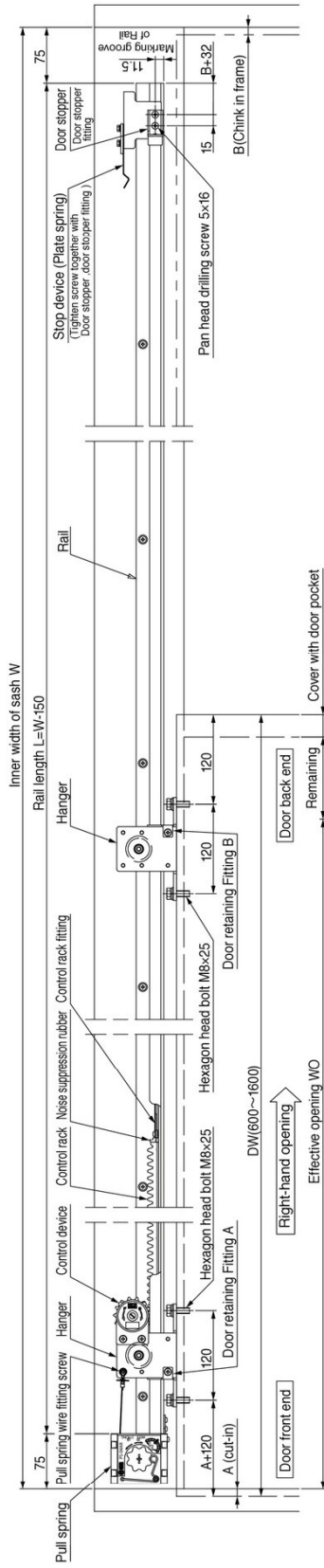


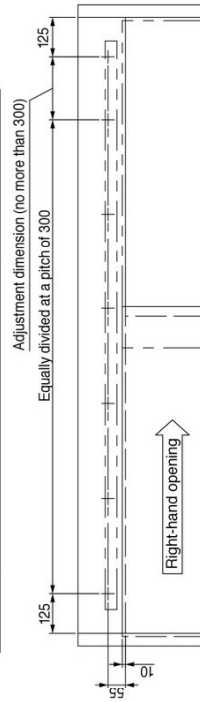
For steel doors, horizontal type
Installation diagrams

NSC-C60V

NSC-C60V

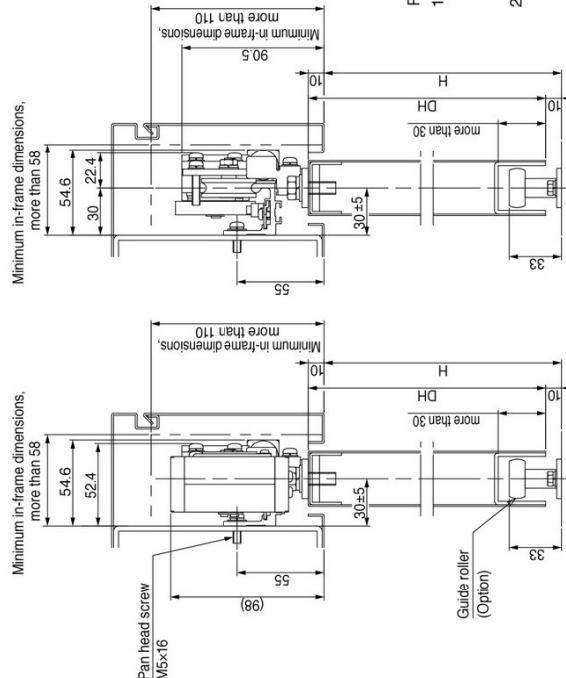


Position diagram for rail-mounting holes (as viewed from inspection panel) M5 (P=0.8)



Remarks

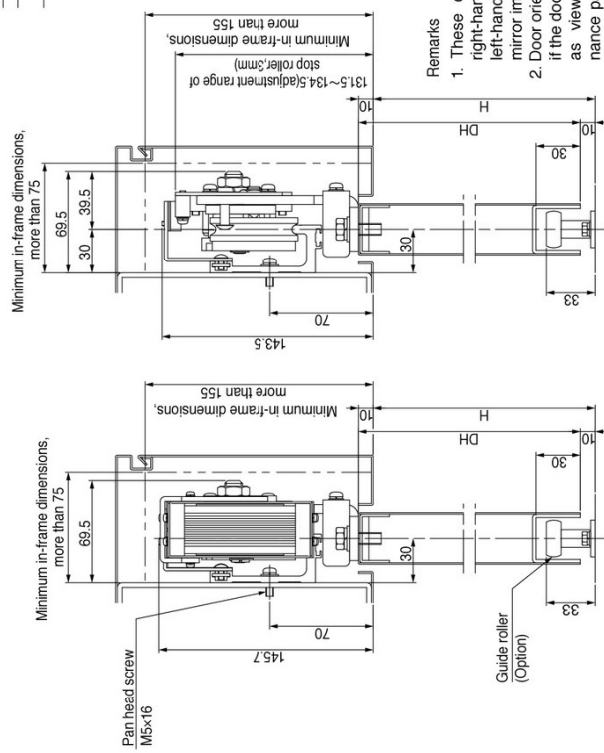
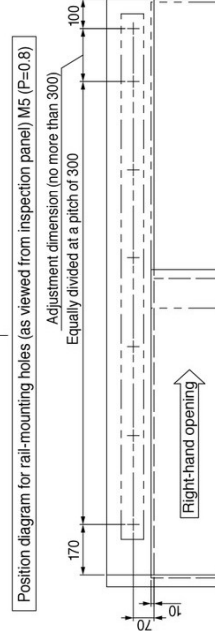
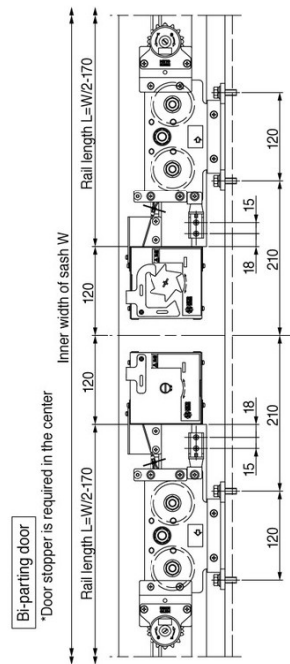
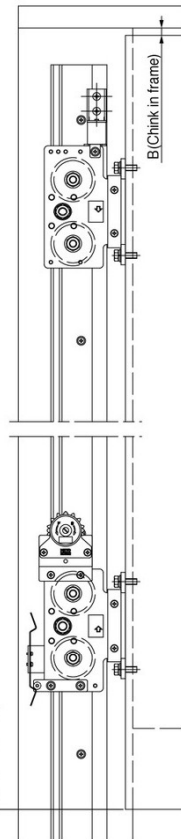
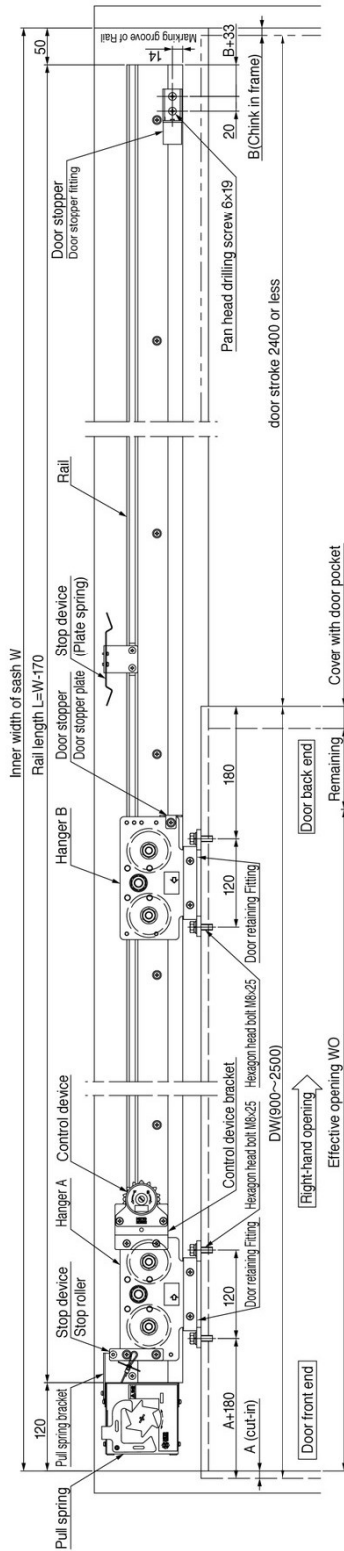
1. These diagrams represent a right-hand opening type. The left-hand opening type is a mirror image of these diagrams.
2. Door orientation is right-handed if the door is opened rightwards as viewed from the maintenance panel and left-handed if the door is opened leftwards.



For very heavy steel doors, horizontal type
Installation diagrams

NSC-C2525

NSC-C2525



Remarks
1. These diagrams represent a right-hand opening type. The left-hand opening type is a mirror image of these diagrams.
2. Door orientation is right-handed if the door is opened rightwards as viewed from the maintenance panel and left-handed if the door is opened leftwards.

Option Single action Double sliding system
Door weight (for 2x doors) : max. 80kg /max. 60kg

SC-2S type/SC-2S-CV type

Features

- Combining with standard sliding door closers, this option enables two sliding doors telescopic-open and closes both doors automatically.
- Allows to secure wide door opening even where door pocket space is limited.
- The product can be used for both left and right hand sliding doors.

Specification

Base model		Item No,	Applicable door weight	Max. width of effective opening
Series name	Model			
C series	DSC-CW03	SC-2S-G16-W	30 kg or less	800-1500 mm
	DSC-CW08	SC-2S-G16-WP	80 kg or less	
	NSC-CW23	SC-2S-G16-W	30 kg or less	
	NSC-CW48	SC-2S-G16-WP	80 kg or less	
	DSC-C03	SC-2S-G** -ST ^{*1}	30 kg or less	
	DSC-C08		80 kg or less	
NSC-C48				
CV series	DSC-CW30V	SC-2S-CWV-G16	30 kg or less	800-1500 mm
	DSC-CW60V		60 kg or less	
	NSC-CW60V			
	DSC-C30V	SC-2S-CV-G** ^{*1}	30 kg or less	
	DSC-C60V		60 kg or less	
	NSC-C60V			

*1. SC-2S-G** models : "**" represents the diameter of guide roller.
 (Example SC-2S-G25-ST is for Ø25 guide roller.) Selection from Ø16/Ø25/Ø30/Ø35.
 *2. Not applicable to pocket door.
 *3. Following items are required for the single action double sliding (telescopic) system.

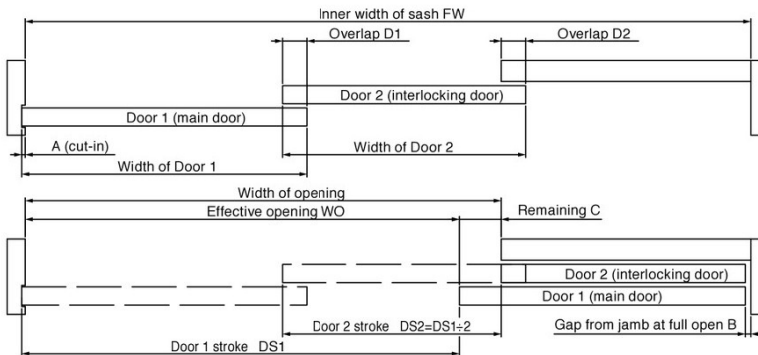


System components	Q'ty	Remark
① Standard set (Base model)	1 set	
② Single action double sliding kit	1 set	Telescopic bracket, hangers for Door 2, door stop for Door 2, mounting plate for wooden door (WP only)
③ Rail for Door 2 (interlocking door)	1 set	
④ Guide rail for Door 2 (interlocking door)	1 set	For CW type base models

Order example
 ① NSC-CW48-311 SET
 ② SC-2S-G16-WP1 SET
 ③ Rail L=22001 SET
 ④ Guide rail L=13001 SET

Calculation formula for main dimensions

Item	Code	Formula	
		Effective opening (reference)	Inner width of sash (reference)
Effective opening(800-1500)	WO	Please specify	$\frac{FW - (A/2) - B + C + D1}{1.5}$
Inner width of sash(3215 or less)	FW	$(1.5 \times WO) + A/2 + B + C + D1$	Please specify
Cut-in (door front end)	A	Please specify	Please specify
Gap from jamb at full open position (10mm or more)	B	Please specify	Please specify
Remaining (100mm or more)	C	Please specify	Please specify
Overlap of Door 1 (main door) and Door 2 (interlocking door) (55mm or more)	D1	Please specify	Please specify
Overlap of Door 2 (interlocking door) and pocket (55mm or more)	D2	D2 = D1	D2 = D1
Width of door 1 (main door), (580mm or more)	DW1	$\frac{WO + A}{2} + C + D1$ (580 or more)	$\frac{WO + A}{2} + C + D1$
Width of door 2 (interlocking door), (480mm or more)	DW2	DW1 - C	DW1 - C (480 or more)
Width of opening	W	WO + C	WO + C
Rail length for Door 1 (main door)	L1	FW - 115	FW - 115
Rail length for Door 2 (interlocking door)	L2	FW - DW1 + D1 + A - 65	FW - DW1 + D1 + A - 65



With this single action double sliding kit, the stroke of Door 2 (DS2) always becomes 1/2 of the stroke of Door 1 (DS1). Make sure that your door design complies DS2 = DS1 x 1/2.

Option Bi-parting System

Door weight (per one door) : max. 80kg/max. 150kgs/max. 60kg

SC-W type/SC-W-CV type

Features

•Combining with standard sliding door closers, this option enables two bi-parting sliding doors open simultaneously and closes both doors automatically.

•Opening one side of the doors will also open the other door, allowing to secure wide door opening even where space is limited.

Specification

Base model		Item No.	Applicable door weight	Max. width of effective opening
Series name	Model			
C series	DSC-CW03	SC-W	30 kg or less	Up to 3000 mm
	DSC-CW08		80 kg or less	
	NSC-CW23		30 kg or less	
	NSC-CW48		80 kg or less	
	DSC-C03		30 kg or less	
	DSC-C08		80 kg or less	
	NSC-C48		80 kg or less	
	DSC-C015		150 kg or less	
NSC-C1215	150 kg or less			
CV series	DSC-CW30V	SC-W-CV	30 kg or less	Up to 3000 mm
	DSC-CW60V		60 kg or less	
	NSC-CW60V		30 kg or less	
	DSC-C30V		30 kg or less	
	DSC-C60V		60 kg or less	
	NSC-C60V		60 kg or less	

*1. Not applicable to pocket door.

*2. Following items are required for the bi-parting system.

System components	Q'ty	Remark
① Standard set (Base model)	2 set	
② Bi-parting System kit	1 set	
③ Door stopper	2 set	Central door stopper



Order example

- ① NSC-C48-22 2 SET
- ② Bi-parting System kit 1 SET
- ③ Door stopper 2 SET

SC-W/SC-W-CV Bi-parting System

Dimension diagram

Adjustment fitting L (Common to SC-W / SC-W-CV)

Adjustment fitting R (Common to SC-W / SC-W-CV)

Wire rope (Common to SC-W / SC-W-CV)

Wire: Stainless steel

Aluminum sleeve (Common to SC-W / SC-W-CV)

Aluminum sleeve: Aluminum

Angle L (Common to SC-W / SC-W-CV)

Angle: Steel

Angle R (Common to SC-W / SC-W-CV)

Angle: Steel

Door stopper (For C Series)

Bracket: Stainless
Rubber door stopper: Synthetic rubber

Door stopper (For CV Series)

Bracket: Steel
Rubber door stopper: Synthetic rubber

Option Free stop device

SFS-B type/SFS-B-H type/SFS-B-CV type

Features

- This option allows the door to stop and hold at any desired position.
- To release the hold, lightly pull the door to closing direction so the door will automatically close.
- This option can be added on to the existing sliding door closer.
- The product can be used for both left and right hand sliding doors.

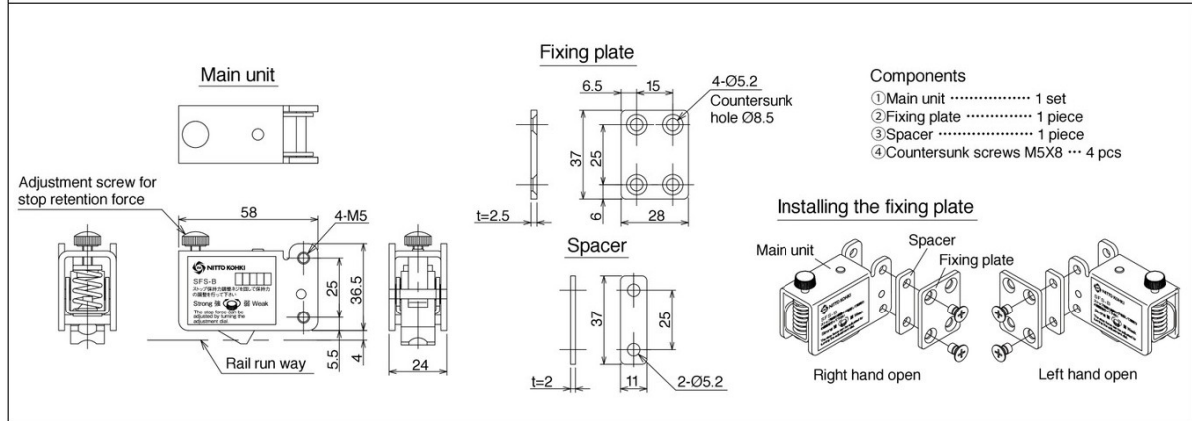
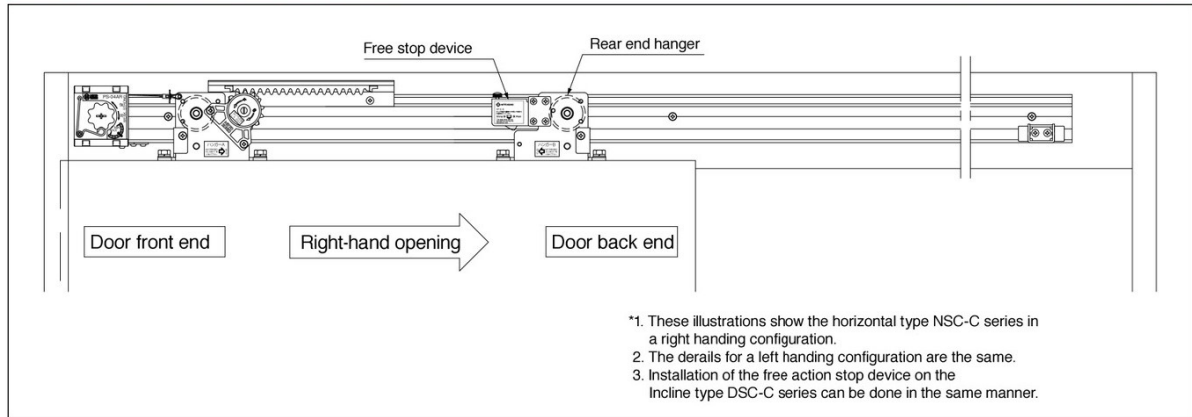
Specification

Series	Base model		Free stop device Model
	Incline	Horizontal	
C series	DSC-CW03	NSC-CW23	SFS-B type
	DSC-CW08	NSC-CW48	
	DSC-CWKS03	NSC-CWKS23	
	DSC-CWKS08	NSC-CWKS48	
	DSC-C03	NSC-C48	
	DSC-C08	NSC-CKS48	
	DSC-CKS03	NSC-CA48	
	DSC-CKS08		
	DSC-C015	NSC-C1215	SFS-B-H type
CV series	DSC-CW30V	NSC-CW60V	SFS-B-CV type
	DSC-CW60V	NSC-CWKS60V	
	DSC-CWKS30V	NSC-C60V	
	DSC-CWKS60V	NSC-CKS60V	
	DSC-C30V		
	DSC-C60V		
	DSC-CKS30V		
	DSC-CKS60V		



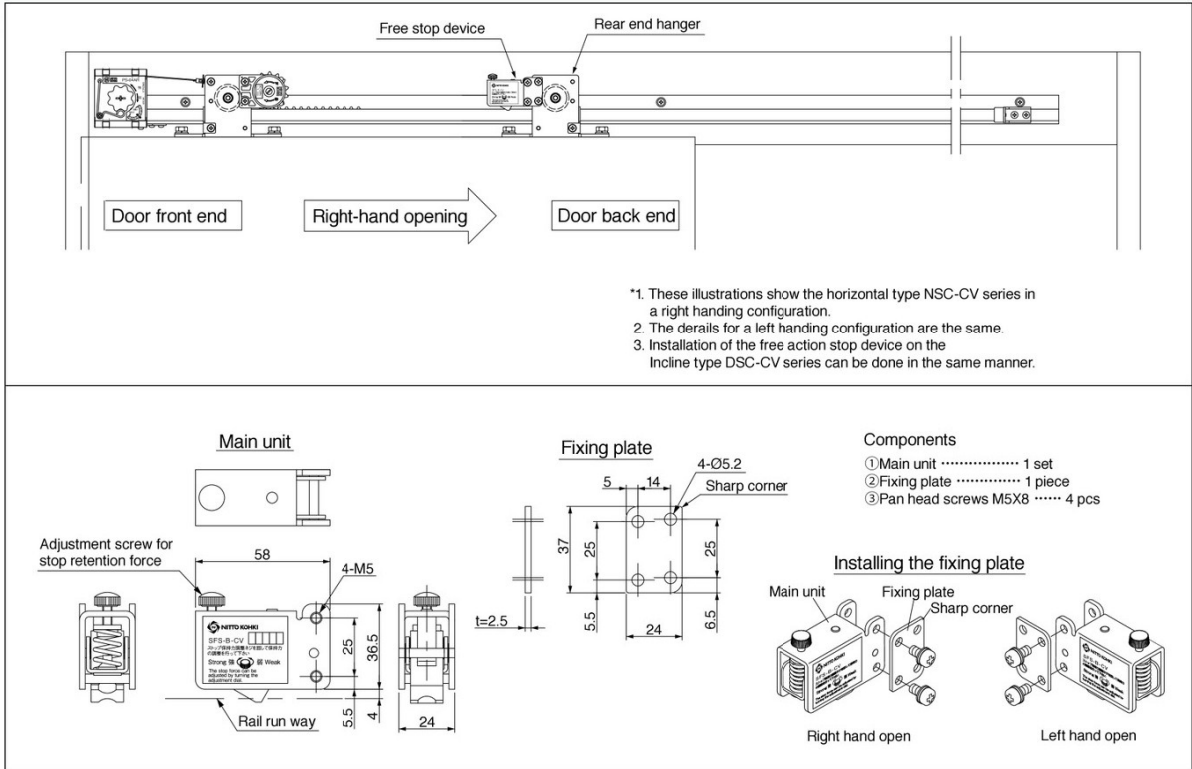
Free stop device SFS-B type

Dimension diagram



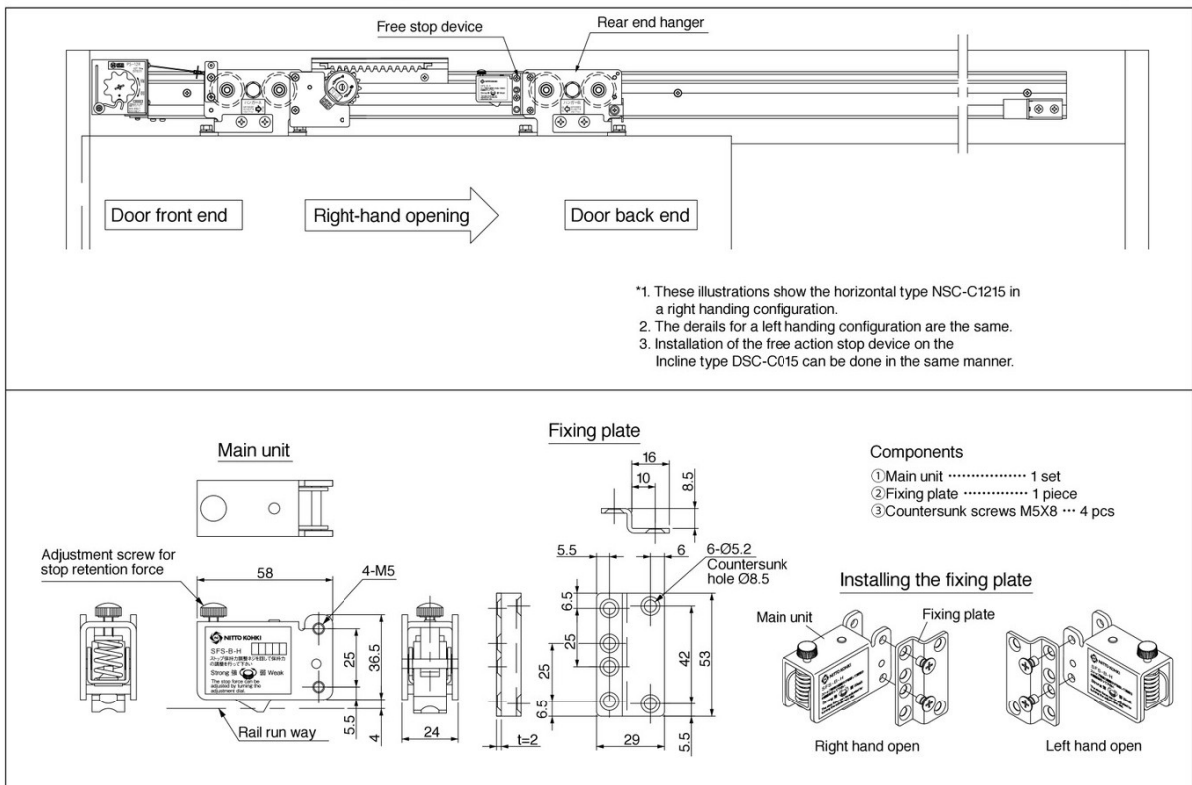
Free stop device SFS-B-CV type

Dimension diagram



Free stop device SFS-B-H type

Dimension diagram

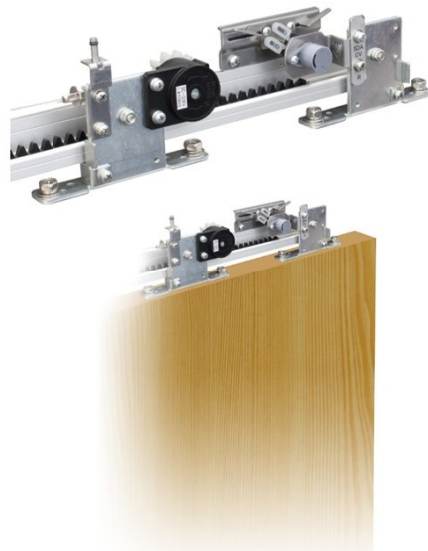


Option **Delayed device**

SDA-C type/SDA-CV type

Features

- This option holds the door at full open position and automatically releases it after desired time period (settable between 0-15sec).
- Increases safety during the passage for all, including the elderly, small children, people of limited mobility and those who carries cargo.



Specification

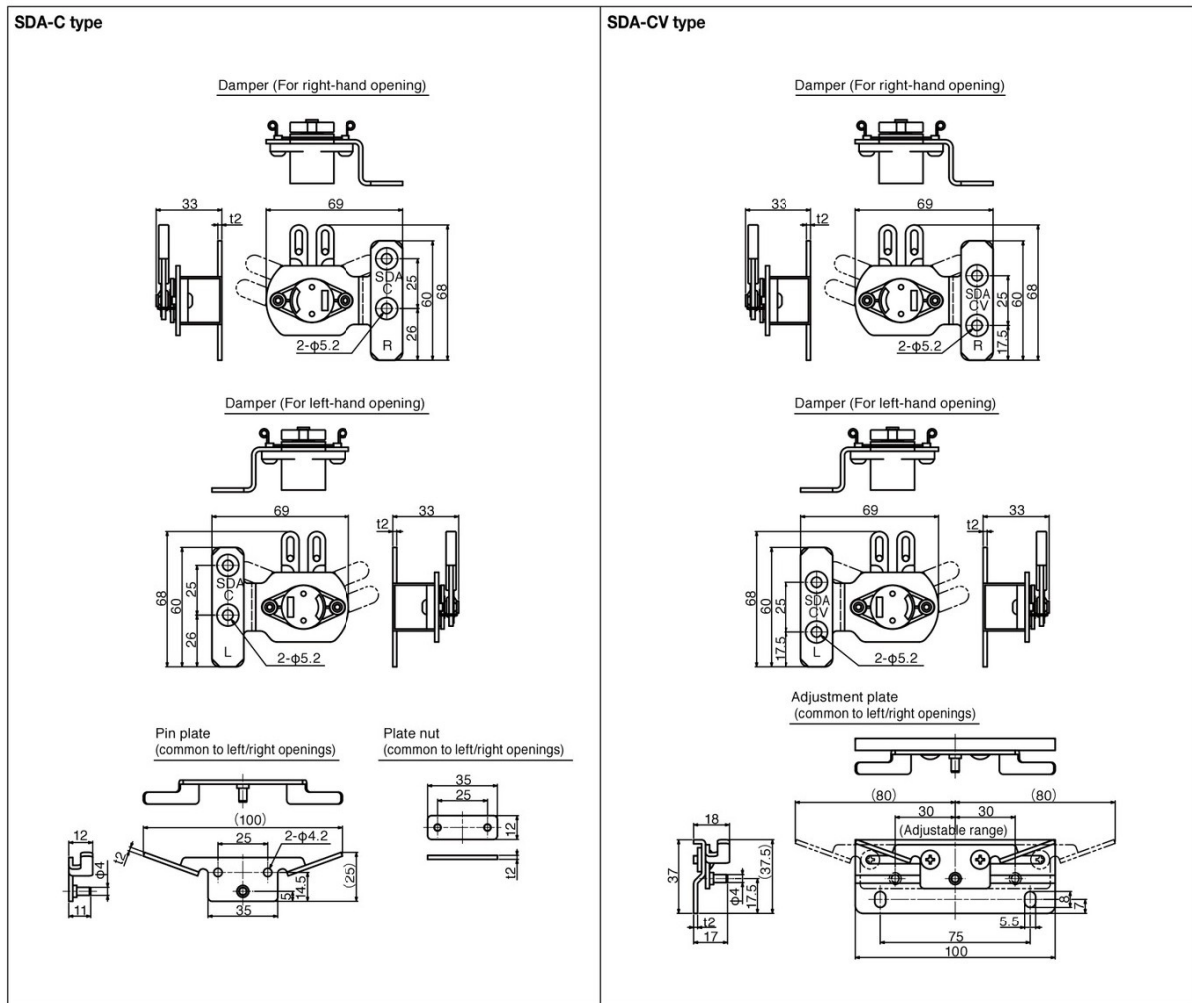
Series	Base model		Delayed device Model
	Incline	Horizontal	
C series	DSC-CW03	NSC-CW23	For right-handed opening: SDA-C-R type
	DSC-CW08	NSC-CW48	For left-handed opening: SDA-C-L type
	DSC-C03	NSC-C48	
	DSC-C08	NSC-CA48	
CV series	DSC-CW30V	NSC-CW60V	For right-handed opening: SDA-CV-R type
	DSC-CW60V	NSC-C60V	For left-handed opening: SDA-CV-L type
	DSC-C30V		
	DSC-C60V		

*1 Not applicable to pocket door.

*2 This product is handed. Choose left-hand or right-hand opening type when ordering.

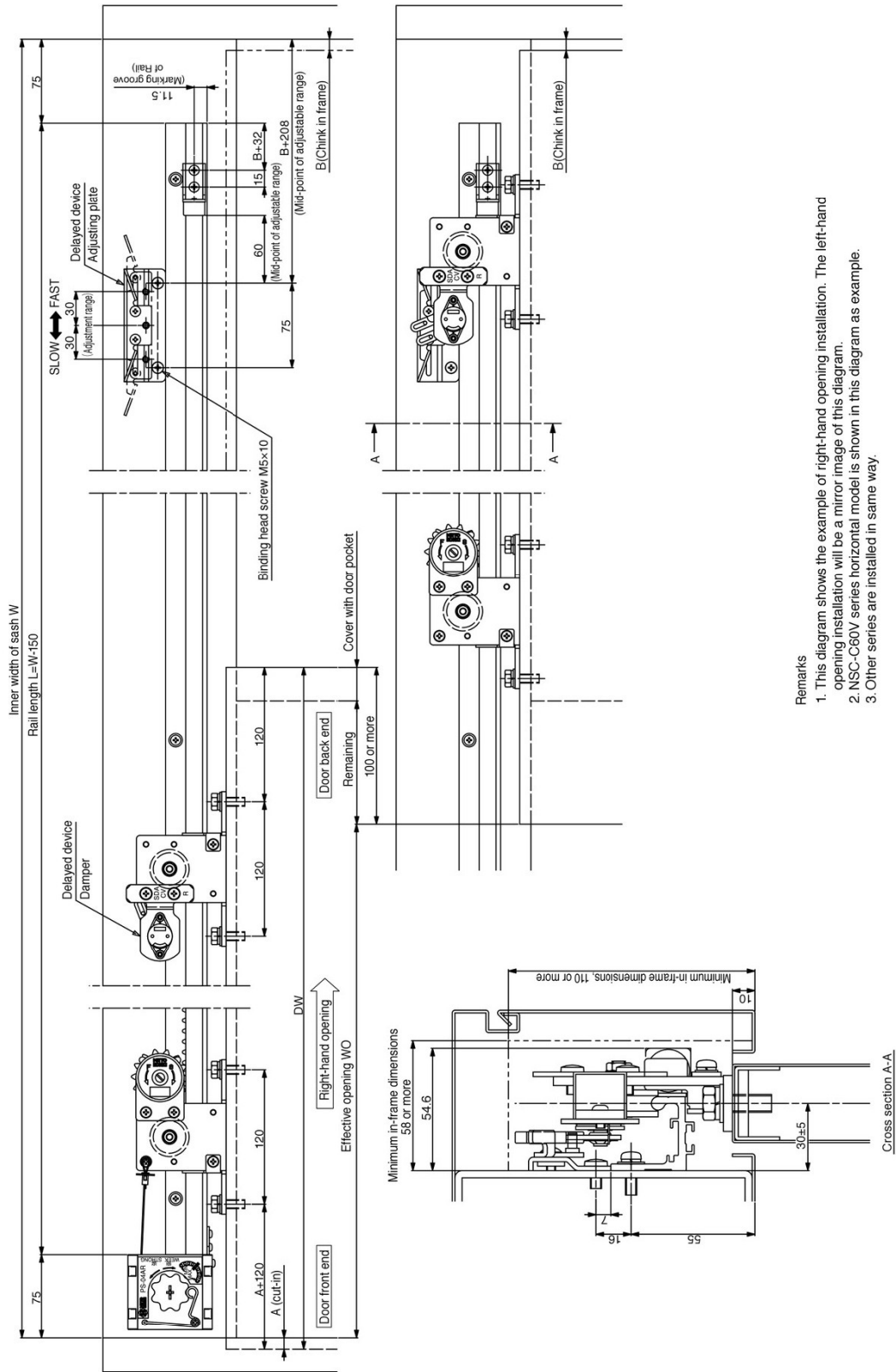
Delayed device

Dimension diagram



Option Delayed device SDA-CV type

Installation diagram

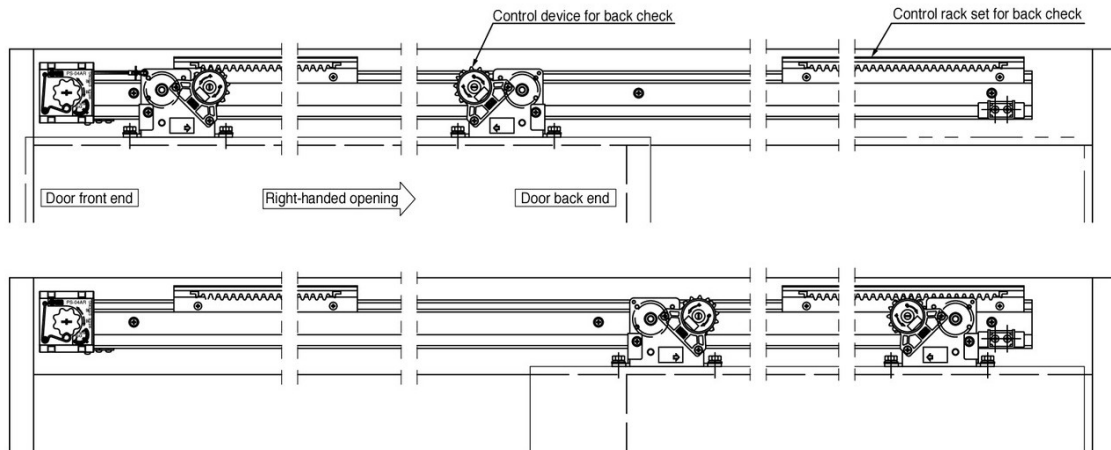


- Remarks
1. This diagram shows the example of right-hand opening installation. The left-hand opening installation will be a mirror image of this diagram.
 2. NSC-C60V series horizontal model is shown in this diagram as example.
 3. Other series are installed in same way.

Option Back check device/Maintenance Panel

Installation diagram

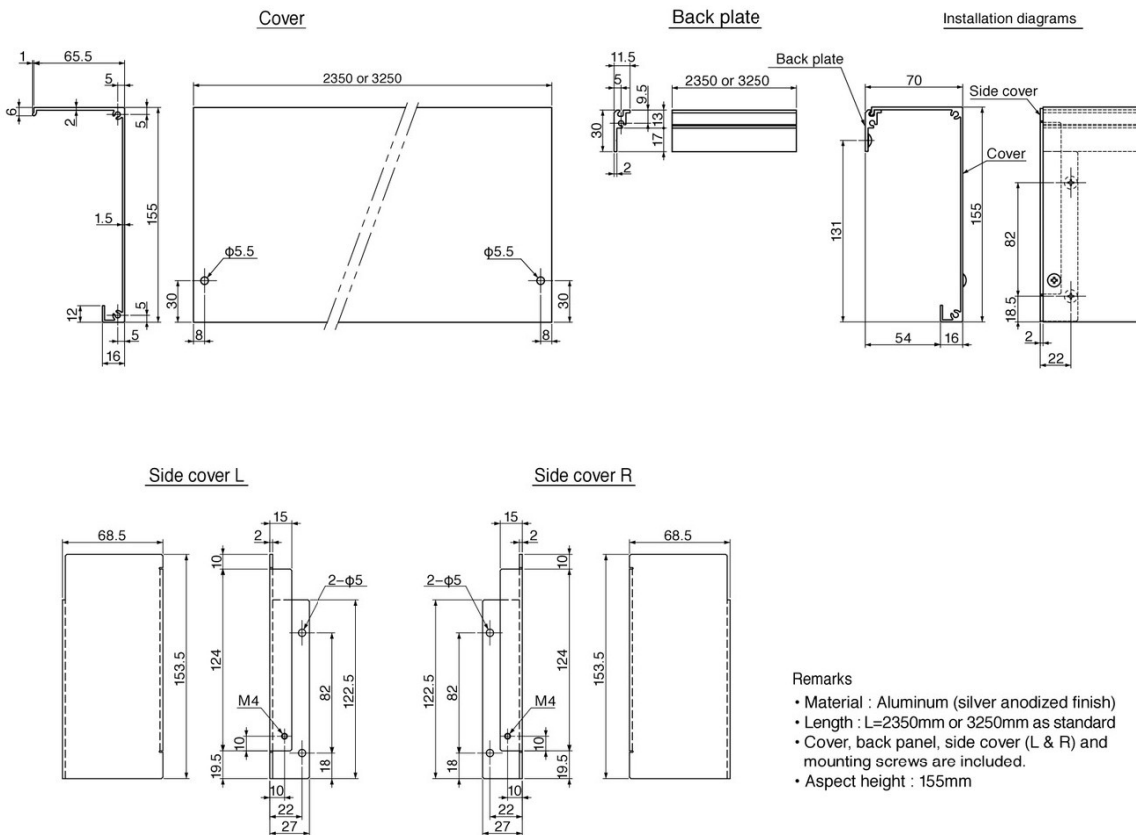
Back check device installation diagrams



Remarks

1. This diagram shows the example of right-hand opening installation.
The left-hand opening installation will be a mirror image of this diagram.
2. NSC-C48 series horizontal model is shown in this diagram as example.
3. By installing additional control device and control rack at the door back end, the damper works towards the door opening direction.
(*The clutch gear of the control device for back check device must be installed in reverse.)
4. Other series are installed in same way.

Dimension diagram for maintenance panel



Option Air Damper for Sliding Door

External dimensions

Air damper unit
Air damper (Common)

Magnet (Common)

SCA-C

Model	Parts name	Q'ty
NSC-CV series	Air damper (Common)	1
DSC-CV series	Magnet (Common)	1
NSC-CKS series	Mounting bracket for air damper	2
DSC-CKS series	Plate nut	4
	Mounting bracket for magnet	1
	M4 x 8 truss head screw	8
	M5 x 10 pan head screw	2

Mounting bracket for air damper

Mounting bracket for magnet

Plate nut

SCA-CV

Model	Parts name	Q'ty	Parts name	Q'ty
NSC-CV series	Air damper (Common)	1	M4x8 truss head screw	4
DSC-CV series	Magnet (Common)	1	M5x10 pan head screw	4
	Mounting bracket for air damper	2	M5x30 truss head tapping screw	4
	Mounting bracket for magnet	1	M5x10 pan head screw	2

Mounting bracket for air damper

Mounting bracket for magnet

SCA-CKSV

Model	Parts name	Q'ty	Parts name	Q'ty
NSC-CKS series	Air damper (Common)	1	M4x8 truss head screw	4
DSC-CKS series	Magnet (Common)	1	M5x10 pan head screw	4
	Mounting bracket for air damper	2	M5x30 truss head tapping screw	4
	Mounting bracket for magnet	1	M5x10 pan head screw	2

Mounting bracket for air damper

Mounting bracket for magnet

42

<https://nitto-kohki.meclib.jp/Kk117/book/print.html?open=0&start=27&end=52&fusenprint=1>

17/26

Option Close assist device

SCP-C type/SCP-CV type/SCP-CKSV type

Features

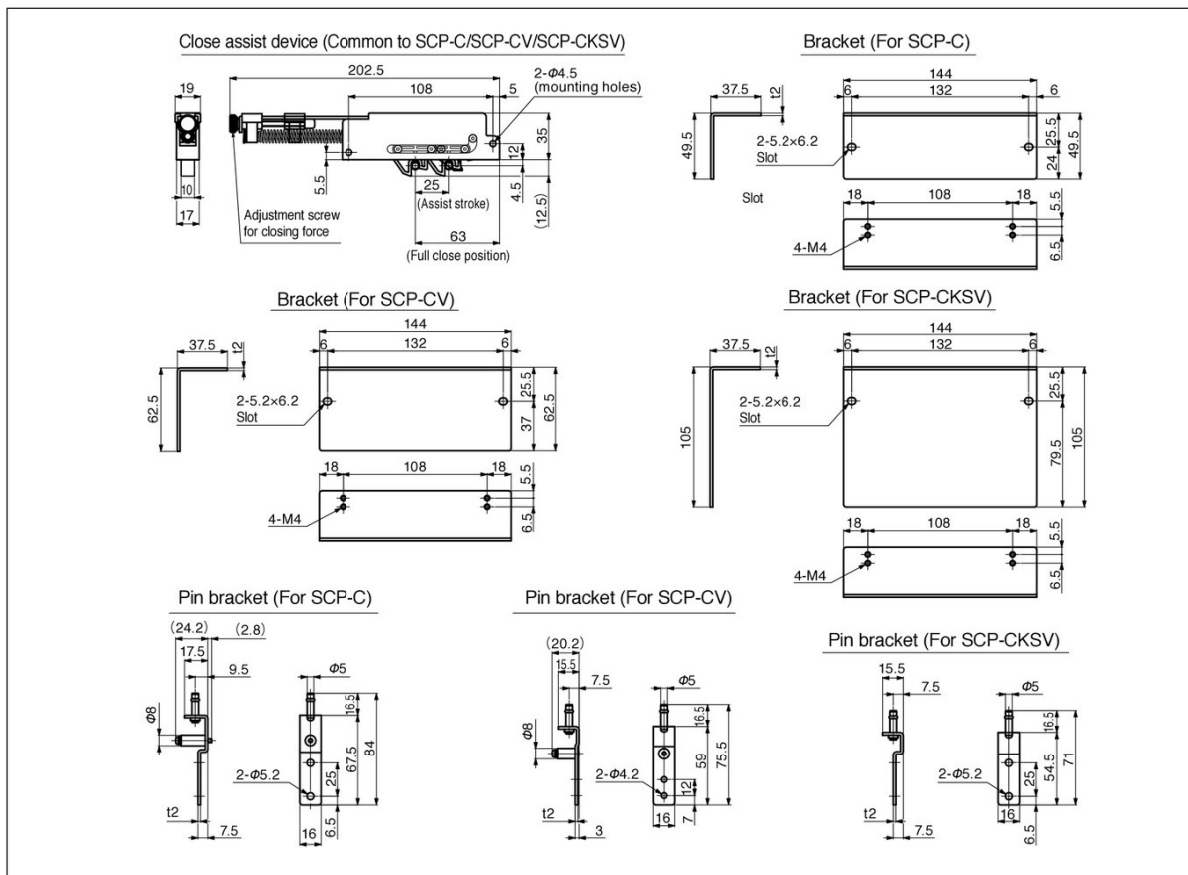
- The product catches the door at 25mm from the full close position and firmly latches.
- Useful in the situations where the door is equipped with electronic lock having tight latch or the door gets often bounced back by airtight seal at closure.
- The latching force is adjustable during the installation. (Adjustment range: 5-10N)
- The product can be used for both left and right hand sliding doors.



Specification

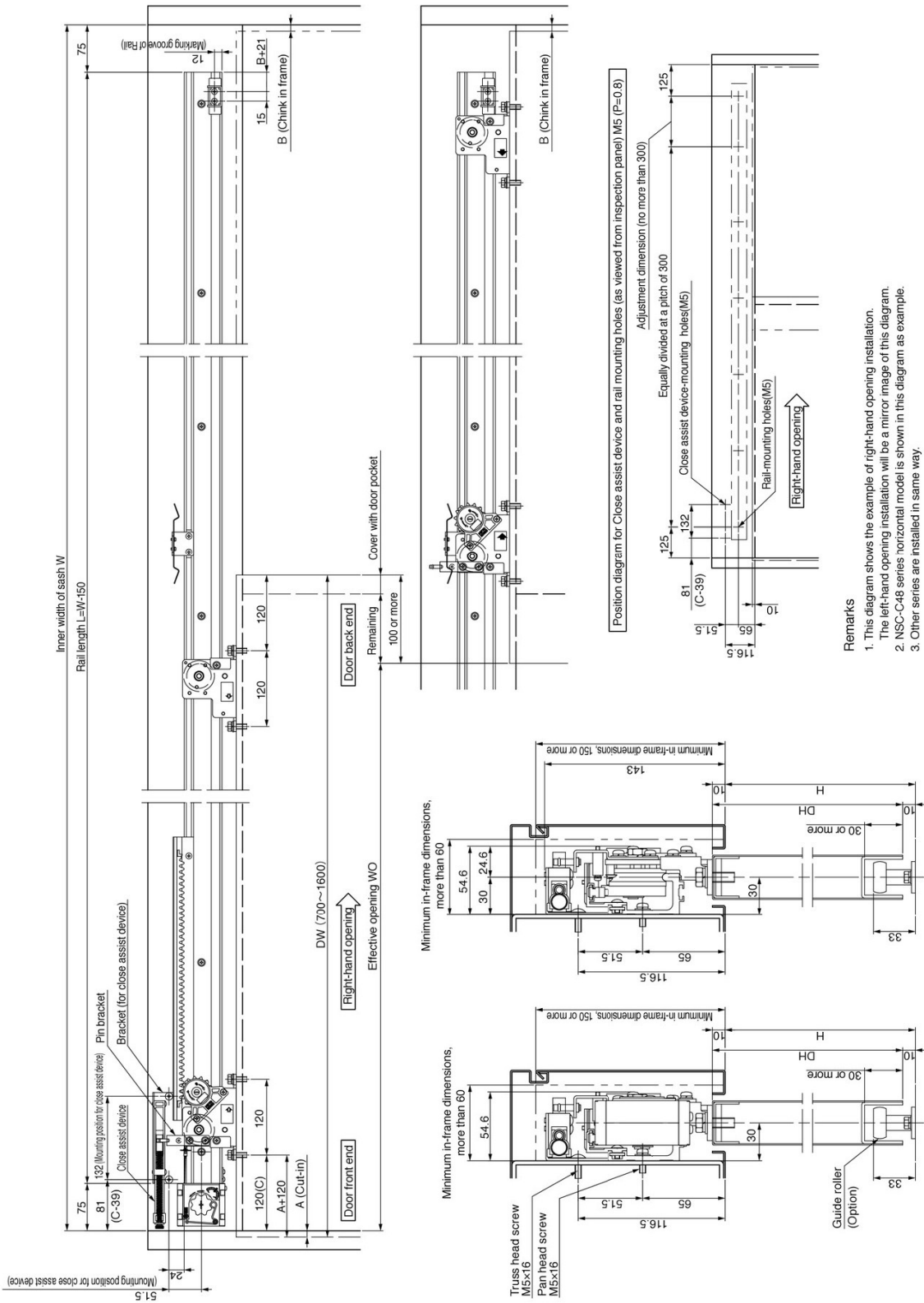
Series	Base model		Close assist device Model
	Incline	Horizontal	
C series	DSC-CW03	NSC-CW23	SCP-C type
	DSC-CW08	NSC-CW48	
	DSC-CWKS03	NSC-CWKS23	
	DSC-CWKS08	NSC-CWKS48	
	DSC-C03	NSC-C48	
	DSC-C08	NSC-CKS48	
	DSC-CKS03	NSC-CA48	
	DSC-CKS08		
CV series	DSC-CW30V	NSC-CW60V	SCP-CV type
	DSC-CW60V	NSC-C60V	
	DSC-C30V		
	DSC-C60V		
	DSC-CWKS30V	NSC-CWKS60V	SCP-CKSV type
	DSC-CWKS60V	NSC-CKS60V	
	DSC-CKS30V		
	DSC-CKS60V		

Close assist device (Common to SCP-C/SCP-CV/SCP-CKSV) Dimension diagram



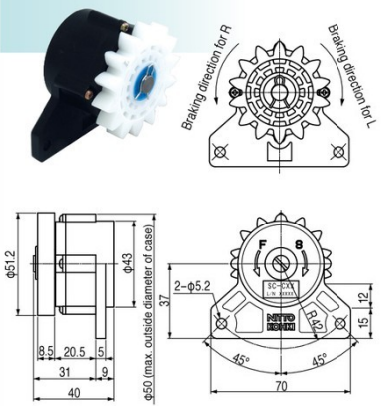
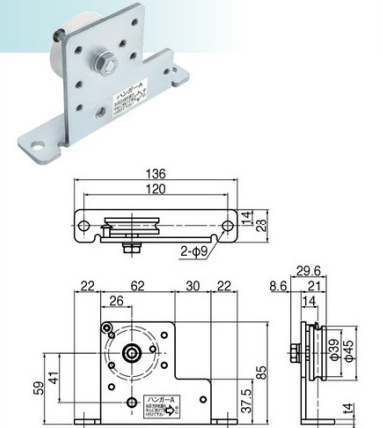
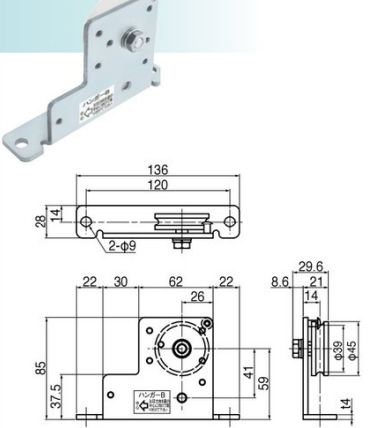
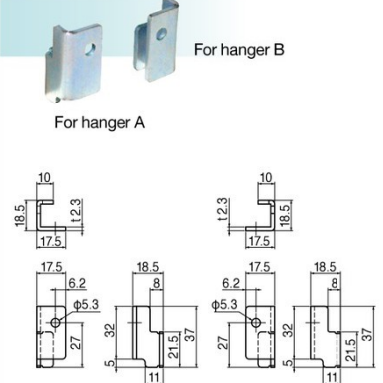
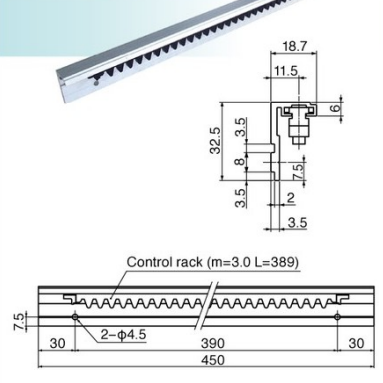
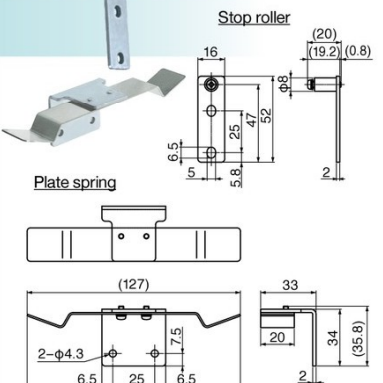
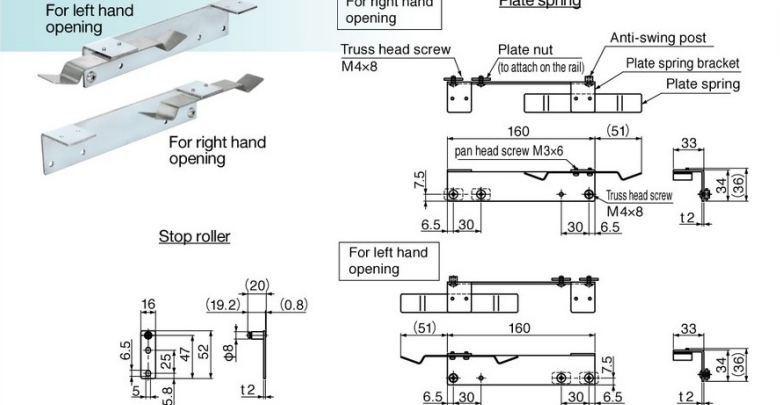
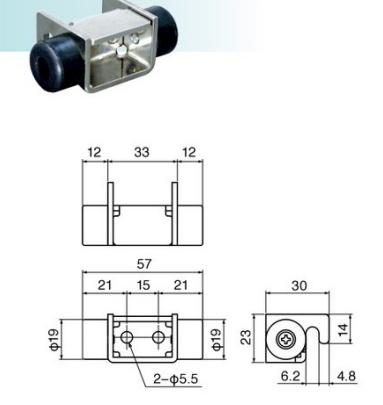
Option Close assist device SCP-C type

Installation diagram



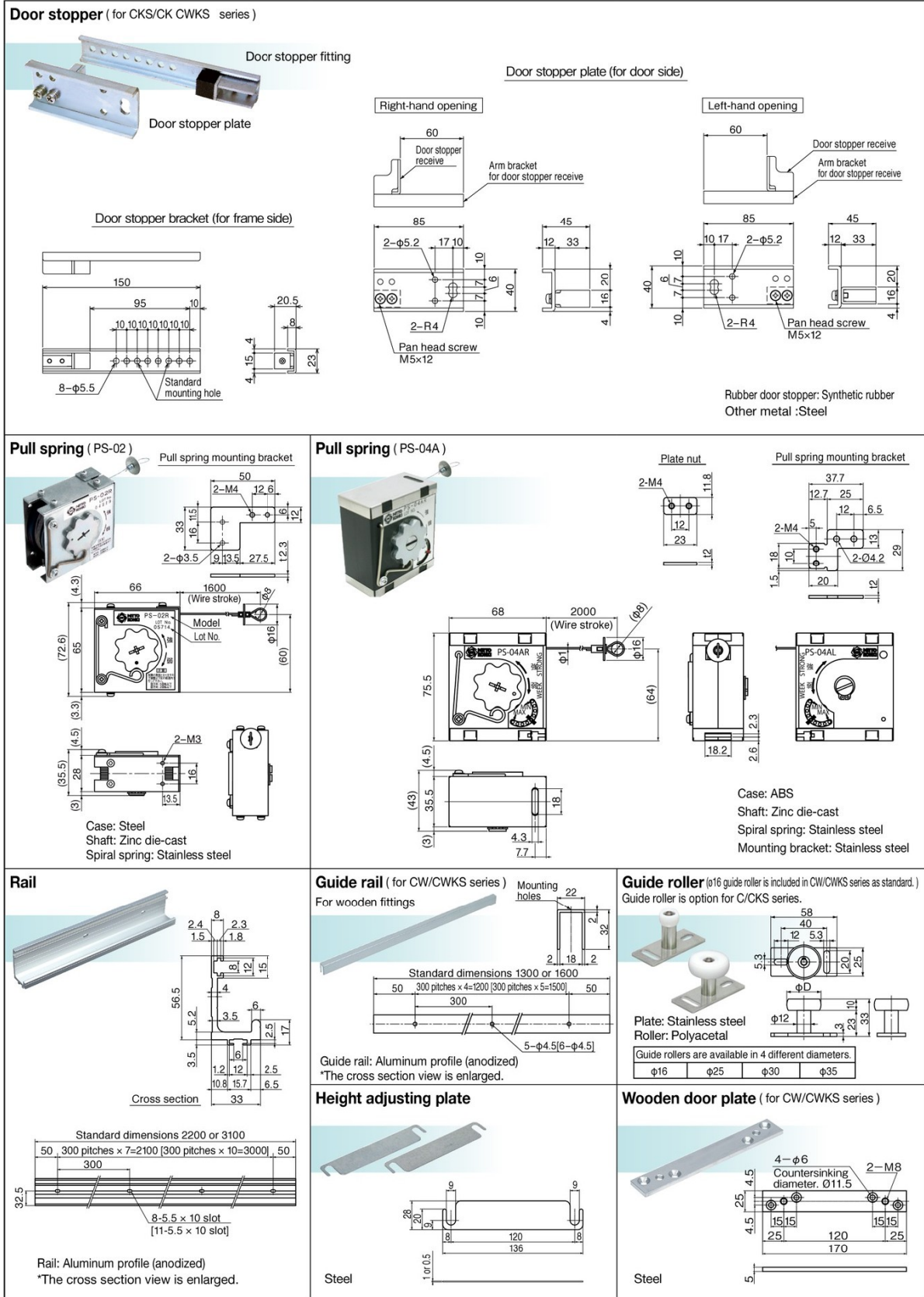
DSC-CW03/CW08, DSC-CWKS03/CWKS08, DSC-C03/C08, DSC-CKS03/CKS08
 NSC-CW23/CW48, NSC-CWKS23/CWKS48, NSC-C48, NSC-CKS48

Parts Dimension Diagram

<p>Control device (SC-C03/SC-C08)</p>  <p>Shaft: Steel Case: Polyacetal Clutch gear: Polyacetal</p>	<p>Hanger A</p>  <p>Bracket: Steel Door roller: Polyacetal</p>	<p>Hanger B</p>  <p>Bracket: Steel Door roller: Polyacetal</p>
<p>Door retaining fitting Hanger</p>  <p>Door retaining Fitting A (For Hanger A) Door retaining Fitting B (For Hanger B)</p> <p>Steel</p>	<p>Control rack set</p>  <p>Control rack: Nylon Plate nut: Steel Noise suppression rubber: Nitrile rubber *The cross section view is enlarged.</p>	<p>Stop device (for C/CW series)</p>  <p>Stop roller Plate spring Spring: Stainless steel Other metal: Steel</p>
<p>Stop device (for CKS/CWKS series) Wall storage type</p>  <p>For left hand opening For right hand opening Stop roller Spring: Stainless steel Other metal: Steel</p>		<p>Door stopper (for C/CW series)</p>  <p>Bracket: Stainless steel Rubber door stopper: Synthetic rubber</p>

DSC-CW03/CW08, DSC-CWKS03/CWKS08, DSC-C03/C08, DSC-CKS03/CKS08
 NSC-CW23/CW48, NSC-CWKS23/CWKS48, NSC-C48, NSC-CKS48

Parts Dimension Diagram



DSC-C015/NSC-C1215

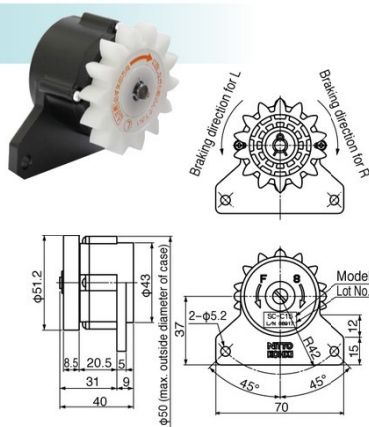
Parts Dimension Diagram

<p>Control device (SC-C15)</p> <p>Shaft: Steel Case: die-cast Clutch gear: Polyacetal</p>	<p>Hanger A (for 150kg)</p> <p>Bracket: Steel Door roller : Polyacetal</p>	<p>Hanger B (for 150kg)</p> <p>Bracket: Steel Door roller : Polyacetal</p>
<p>Control device bracket (for 150kg)</p> <p>Steel</p>	<p>Pull spring (PS-12)</p> <p>Case: Steel Shaft: Die-cast Spiral spring: Stainless steel</p>	<p>Control rack set H</p> <p>Control rack : Nylon Plate nut: Steel *The cross section view is enlarged.</p>
<p>Door retaining fitting Hanger (for 150kg)</p> <p>Steel</p>	<p>Door stopper (for heavy doors)</p> <p>Door stopper is directly mounted by pan head tapping screws (O6x19). Metal: Steel Rubber door stopper: Synthetic rubber</p>	<p>Stop device (for 150kg)</p> <p>Spring: Stainless steel Other metal :Steel</p>
<p>Rail</p> <p>Rail: Aluminum profile (anodized) *The cross section view is enlarged.</p>	<p>Height adjusting plate</p> <p>Steel</p>	<p>Guide roller</p> <p>Guide rollers are available in 4 different diameters. φ16 φ25 φ30 φ35 Plate: Stainless steel Roller: Polyacetal</p>

NSC-C2525

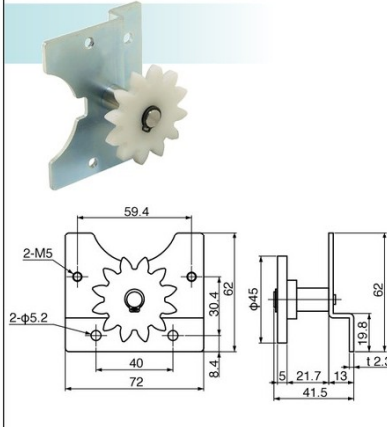
Parts Dimension Diagram

Control device (SC-C25)



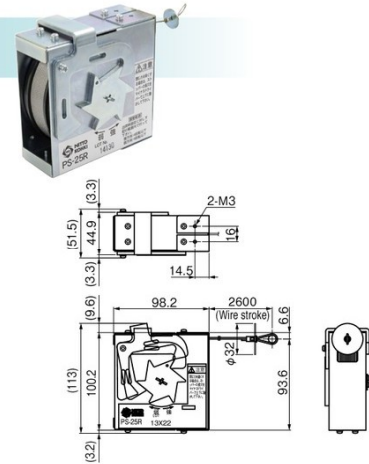
Shaft: Steel
Case: die-cast
Clutch gear: Polyacetal

Control device bracket (for 250kg)



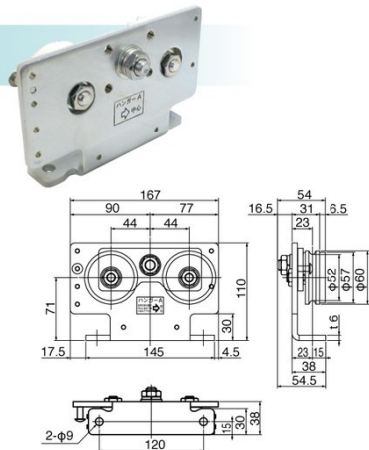
Bracket: Steel
Link gear : Resin

Pull spring (PS-25)



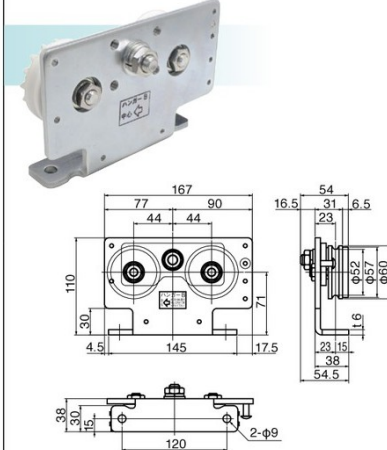
Case: Steel
Spiral spring: Stainless steel

Hanger A (for 250kg)



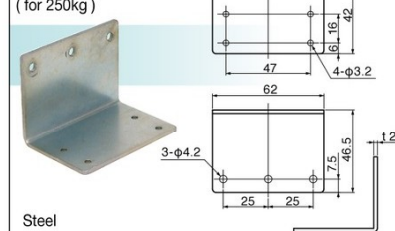
Bracket: Steel
Door roller : Polyacetal

Hanger B (for 250kg)



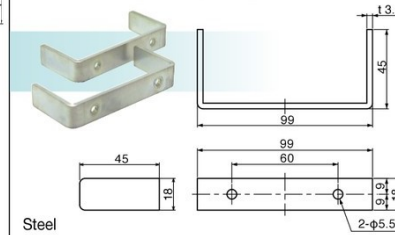
Bracket: Steel
Door roller : Polyacetal

Pull spring bracket (for 250kg)



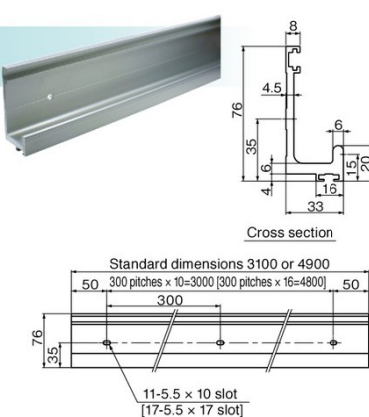
Steel

Door retaining fitting Hanger (for 250kg)



Steel

Rail (for 250kg)

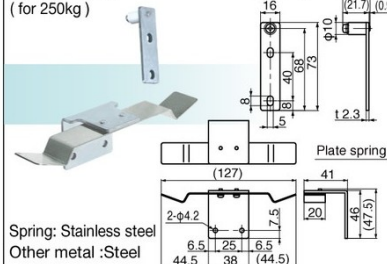


Rail: Aluminum profile (anodized)
*The cross section view is enlarged.

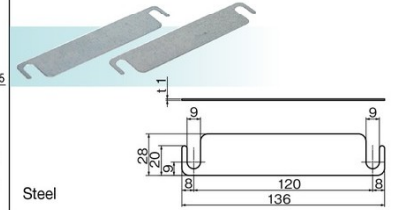
Door stopper (for heavy doors)



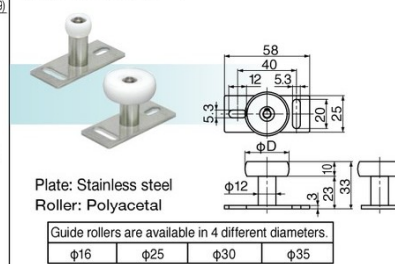
Stop device (for 250kg)



Height adjusting plate

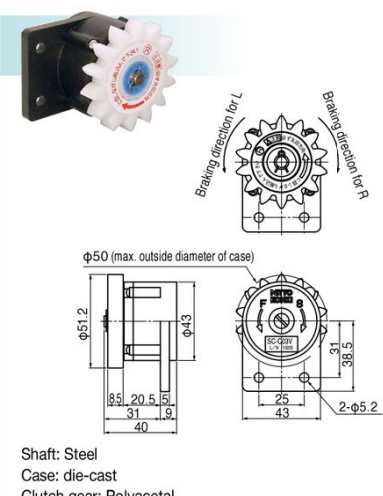
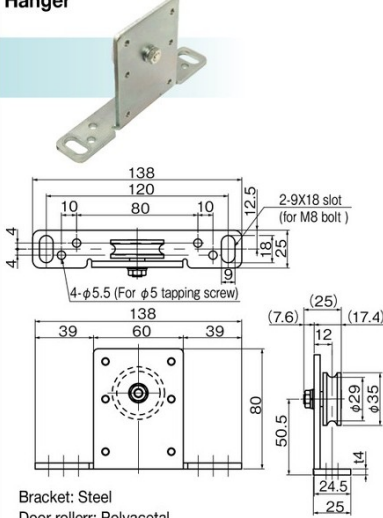
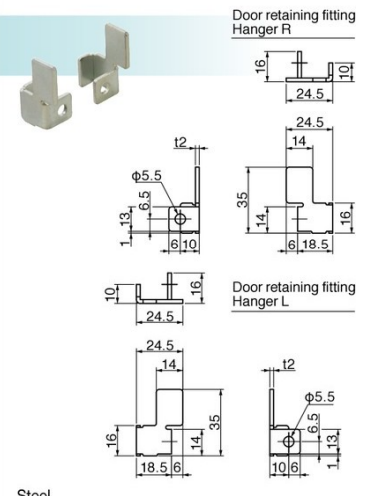
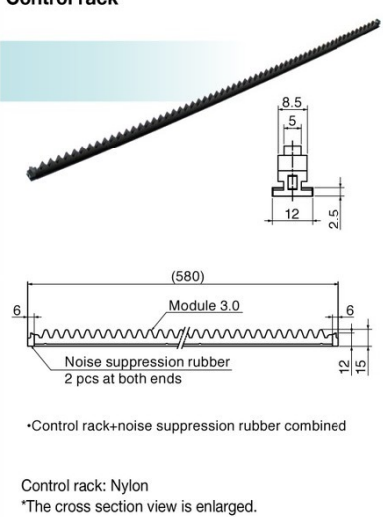
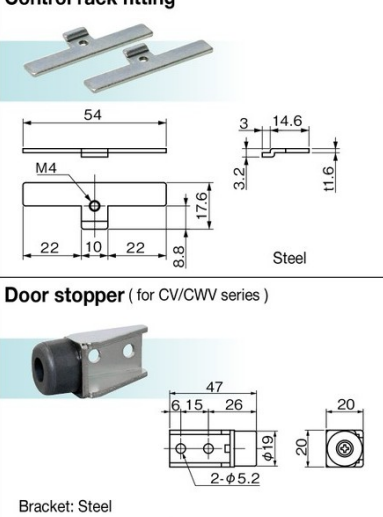
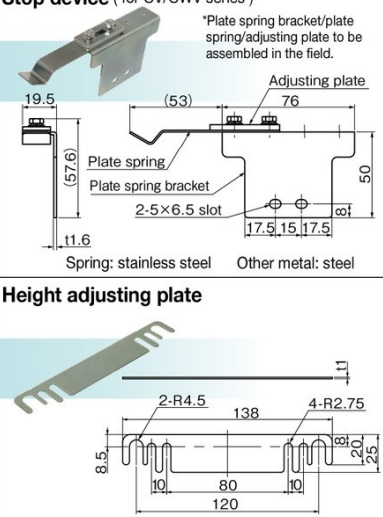
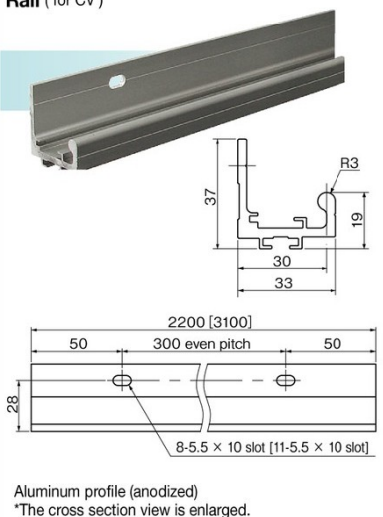
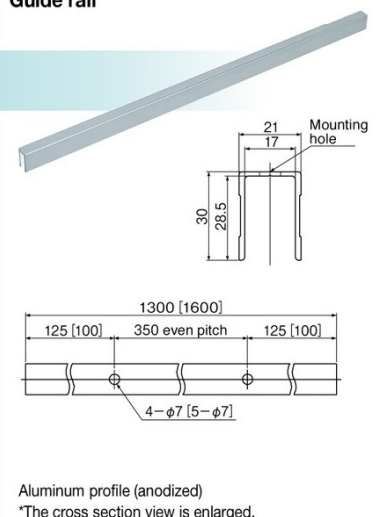
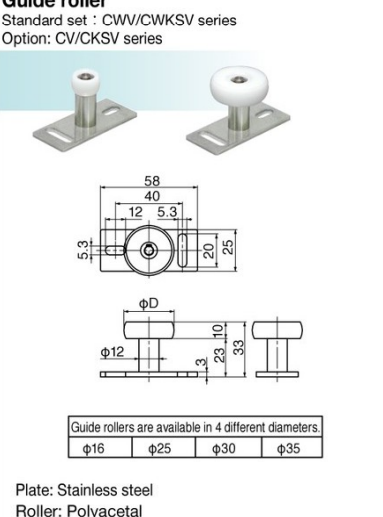


Guide roller (Option)



DSC-CW30V/CW60V, DSC-CWKS30V/CWKS60V, DSC-C30V/C60V, DSC-CKS30V/CKS60V, NSC-CW60V, NSC-CWKS60, NSC-C60V, NSC-CKS60V

Parts Dimension Diagram

<p>Control device (SC-C03V, SC-C06V)</p>  <p>Shaft: Steel Case: die-cast Clutch gear: Polyacetal</p>	<p>Hanger</p>  <p>Bracket: Steel Door roller: Polyacetal</p>	<p>Door retaining Fitting</p>  <p>Steel</p>				
<p>Control rack</p>  <p>Control rack: Nylon *The cross section view is enlarged. Noise suppression rubber: Synthetic rubber</p>	<p>Control rack fitting</p>  <p>Steel</p>	<p>Stop device (for CV/CWV series)</p>  <p>Spring: stainless steel Other metal: steel</p>				
<p>Rail (for CV)</p>  <p>Aluminum profile (anodized) *The cross section view is enlarged.</p>	<p>Guide rail</p>  <p>Aluminum profile (anodized) *The cross section view is enlarged.</p>	<p>Guide roller</p> <p>Standard set : CWV/CWKS series Option: CV/CKSV series</p>  <p>Plate: Stainless steel Roller: Polyacetal</p> <p>Guide rollers are available in 4 different diameters.</p> <table border="1"> <tr> <td>φ16</td> <td>φ25</td> <td>φ30</td> <td>φ35</td> </tr> </table>	φ16	φ25	φ30	φ35
φ16	φ25	φ30	φ35			

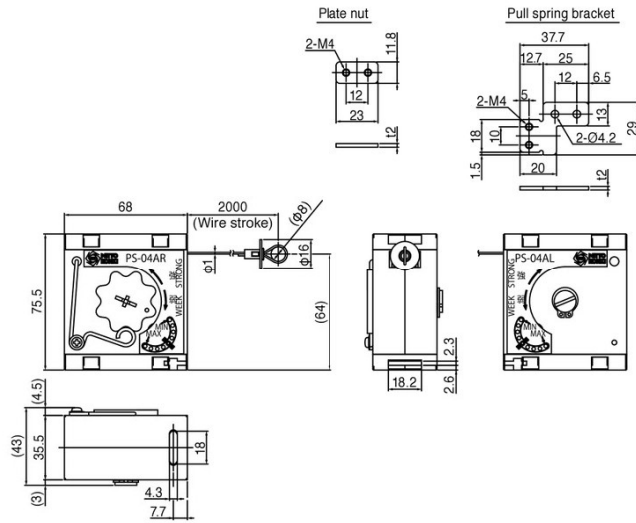
DSC-CW30V/CW60V, DSC-CWKS30V/CWKS60V, DSC-C30V/C60V,
DSC-CKS30V/CKS60V, NSC-CW60V, NSC-CWKS60, NSC-C60V, NSC-CKS60V

Parts Dimension Diagram

Pull spring (PS-04A-CV)



Case: ABS
Shaft: Zinc die-cast
Spiral spring: Stainless steel
Mounting bracket: Stainless steel



Door stopper/Stop device (for CKSV/CWKS series)

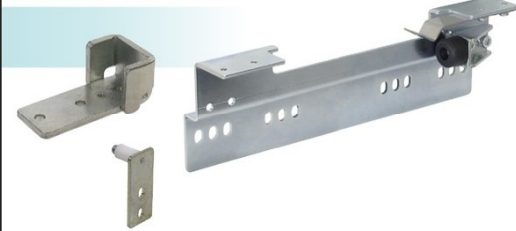
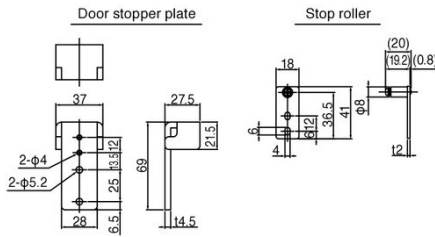
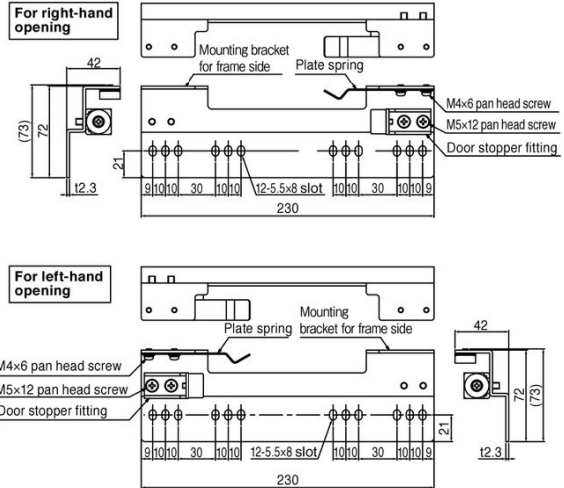


Plate spring: Stainless steel
Door stopper rubber: Synthetic rubber
Other Metal fittings: Steel



Parts for door stopper/stop device for frame side

*Mounting bracket /plate spring /door stopper bracket to be assembled in the field.



User-friendly technology

Door Closer

Auto Hinge & Sliding Door Closer

OTHER RELATED PRODUCTS

AUTO-HINGE

Flag Type

- Door closer + hinge, All-In-One. Designed with cutting edge technology from Nitto Kohki. Easy to install on all kinds of swing doors (regular rectangle doors, arch doors, etc).
- Variety of models available for different size and type of doors (wooden, aluminum, lightweight steel, steel and glass doors).



PC series

- Drip-proof design, suitable for outdoor use or moist area.
- Adopts an actuator with unique temperature sensor, ensuring consistent closing speed all year round.



700 series

- Made in highly durable stainless steel with special sealing mechanism.
- Commercial grade, widely applicable for various locations including bathrooms, seashores etc.

Butterfly Type

- Small and slim, ideal for lightweight doors (indoor use).
- The butterfly design makes installation highly efficient.
- Non handed - Can be used for both right and left hand opening doors.

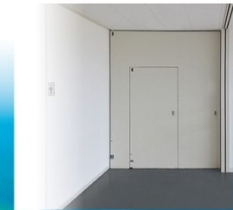


AUTO-HINGE

Center Hang Type

Concealed door hinge with self-closing function. Built into the door, offering clean exterior appearance. Excellent performance and durability, suitable for the fire proof doors.

- Concealed design, built into the bottom side of the door. Completely hidden inside the door, offering streamlined door appearance.
- Suitable for fire doors, smoke ventilations, air intake doors or regular swing doors.



DISTRIBUTED BY

Focused on you

NITTO KOHKI CO., LTD.

DOOR CLOSERS Sales Dept:

8F, VORT Ueno, 4-7, Ueno 7-chome, Taito-ku,
Tokyo 110-0005, Japan
Tel : +81-3-5806-1030 Fax : +81-3-3843-5188
E-mail : Kentokyo@nitto-kohki.co.jp

Head Office:

9-4, Nakaikegami 2-chome, Ohta-ku,
Tokyo 146-8555, Japan

Web www.nitto-kohki.co.jp/e



ISO 9001
ISO 14001
JQA-2025
JQA-EM4057
H.Q./R&D Lab

Specifications and designs are subject to change at any time without notice.

18g-net01-①