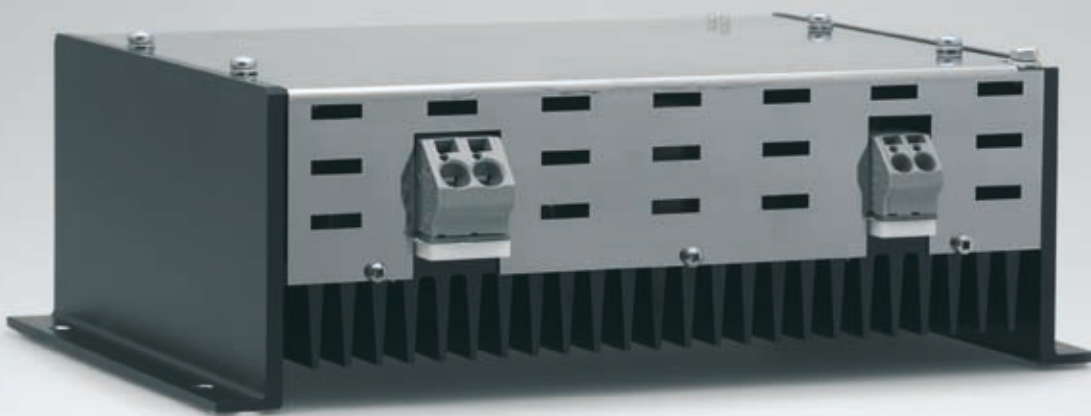


Voltage Stabiliser

for Batteries



safe | compact | variable

Rail vehicles are susceptible to frequent voltage fluctuations outside the permissible limits in DC circuits with battery back-up. This can lead to unwanted malfunctions of the connected consumers.

The voltage stabiliser is adept at keeping the supply voltage in the approved range (EN 50155) thus preventing system failures. The control range can be specified by the customer within broad limits.

Features

- Two independently operating controllers for undervoltage and overvoltage
- Supreme efficiency within control limits
- For consumers up to 800 W
- Vibration test in accordance with IEC 61373
- Radio interference suppression in conformity with EN 50 121-3-2

Voltage Stabiliser

for Batteries

Technical Data

	BBW 110/110-004	BBW 110/48-008	BBW 110/24-010	BBW 72/24-011	BBW 36/24-011	BBW 24/24-018
Nominal Input Voltage	110 V	110 V	110 V	72 V	36 V	24 V
Input Voltage Range	35 ... 160 V	60 ... 160 V	77 ... 160 V	50 ... 90 V	25 ... 47 V	7 ... 40 V
Nominal Output Voltage	110 V	48 V	24 V	24 V	24 V	24 V
Minimum Output Voltage	105 V	46,5 V	23 V	23 V	23 V	23 V
Maximum Output Voltage	115 V	49,5 V	25 V	25 V	25 V	25 V
Maximum Output Power	450 W	350 W	250 W	300 W	260 W	420 W
Ambient Temperature Range	- 25 ... + 55 °C					
Protection Classification	IP 20					
Dimension	250 x 90 x 190 mm ³ (W x H x D)					
Weight	4,2 kg					
Protection	Protection against Overtemperature, Short-Circuit, Reverse Input Voltage (internal fuse)					
Cooling	Convection					