



**Features**

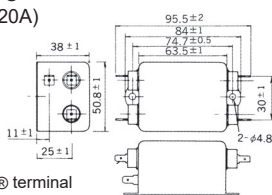
- Low range high attenuation effects by super high  $\mu$  material (20~30dB at 10,000Hz). Excellent pulse absorption (more than 25dB attenuation with 1,500V pulse).
- Two types of leakage current
  - less than 70 $\mu$ A
  - less than 10 $\mu$ A (applies to medical equipment)
- Three terminal styles (Faston®, solder and screw).
- Bleeder resistor for electric shock protection.

**Applications**

- Information processing devices (for Europe), Medical equipments, Office appliances and Various control systems.

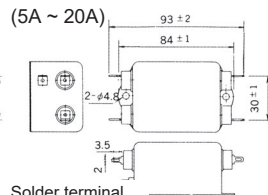
**Dimensions**

Faston® terminal  
(5A ~ 20A)



Faston® terminal  
(#250)

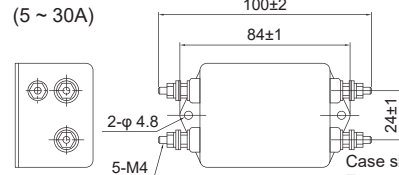
Solder terminal  
(5A ~ 20A)



Solder terminal

Case size is the same as Faston® terminal type

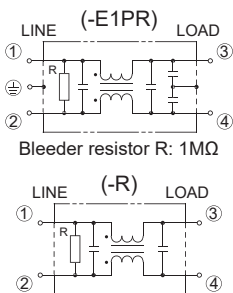
Screw terminal  
(5 ~ 30A)



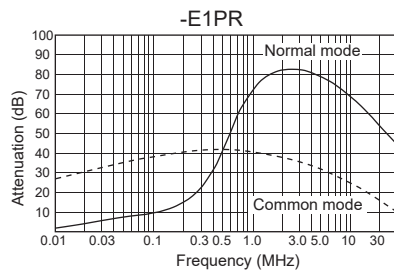
Case size is the same as Faston® terminal type

Unit: mm

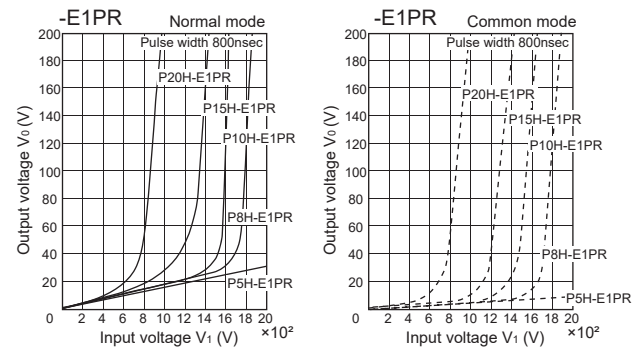
**Circuit**



**Static characteristics (Representative example)**



**TVSS characteristics**



**Electrical Specifications**

Rated Voltage **250Vac**

Safety Standard	Model Number	Rated Current (A)	Test Voltage	Insulation Resistance	Leakage Current max.	Voltage Drop max.	Temperature Rise max.	Operating Temperature (°C)	Insertion losses		Weight typ.(g)
									Normal Mode (MHz)	Common Mode (MHz)	
	SUP-P5H-E1PR(3/4)	5	Line to Line 1,000Vac 50/60Hz 60sec	Line to Case 6,000M $\Omega$ min (at 500Vdc)	70 $\mu$ A (at 250Vac 60Hz)	1.0Vac	35K	-25~ +50 (85°C with Temp. rise)	0.5 ~ 20	0.05 ~ 20	275
	SUP-P8H-E1PR(3/4)	8							0.6 ~ 30	0.09 ~ 30	
	SUP-P10H-E1PR(3/4)	10							0.7 ~ 30	0.1 ~ 30	
	SUP-P15H-E1PR(3/4)	15							1.0 ~ 30	3.0 ~ 30	
	SUP-P20H-E1PR(3/4)	20							1.5 ~ 30	4.0 ~ 30	
	*SUP-P30H-E1PR-4	30							3.0 ~ 30	-	
	SUP-P5H-R(3/4)	5	Line to Case 2,000Vac 50/60Hz 60sec		10 $\mu$ A (at 250Vac 60Hz)			0.5 ~ 20	-		
	SUP-P8H-R(3/4)	8						0.6 ~ 30	-		
	SUP-P10H-R(3/4)	10						0.7 ~ 30	-		
	SUP-P15H-R(3/4)	15						1.0 ~ 30	-		
	SUP-P20H-R(3/4)	20						1.5 ~ 30	-		
	*SUP-P30H-R-4	30						3.0 ~ 30	-		

Guaranteed attenuation is more than 40dB in normal mode and more than 35dB in common mode for SUP-PH-E1PR series. (more than 25dB at 15A and more than 20dB at 20A, 30A) \*only screw terminal type



Safety Standard	File No.*
UL :UL-1283	E78644
CSA :CSA C22.2 No.8	060681_0_000
SEMKO :EN60939-3	SE-ENEC-2201191

The "ENEC" mark is a common European product certification mark based on testing to harmonised European safety standard.

\*File No. may be revised without notice. Please contact us at the time of your request for certifications.

- SUP-P□H-E1PR-0 Series (Faston® terminal)
- SUP-P□H-E1PR-2 Series (Solder terminal)
- SUP-P□H-E1PR-4 Series (Screw terminal)

